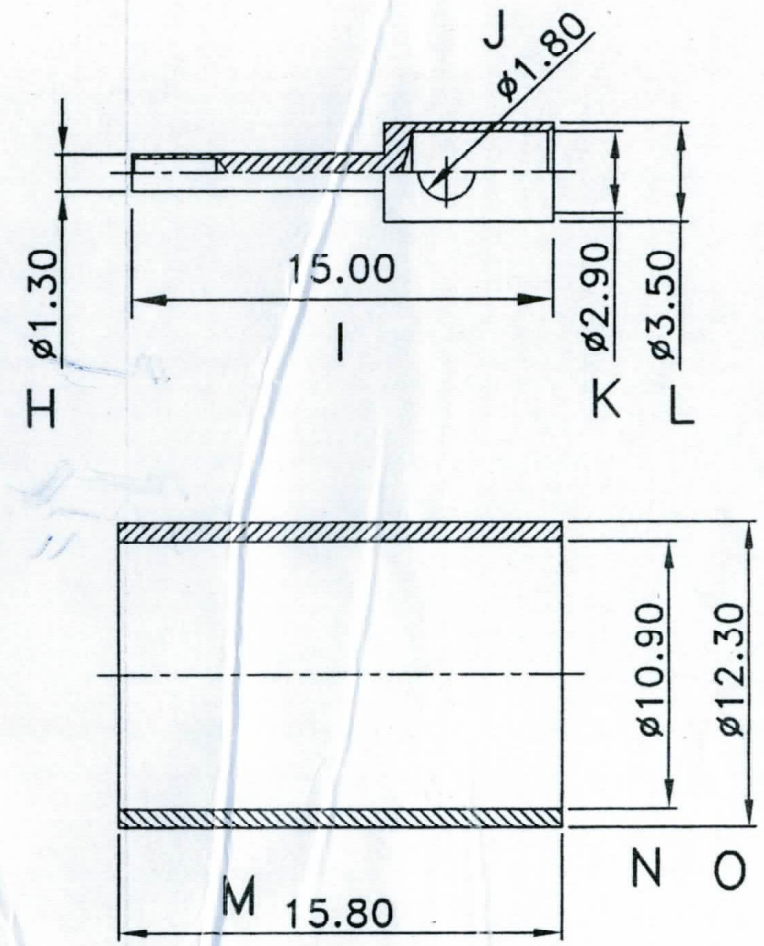
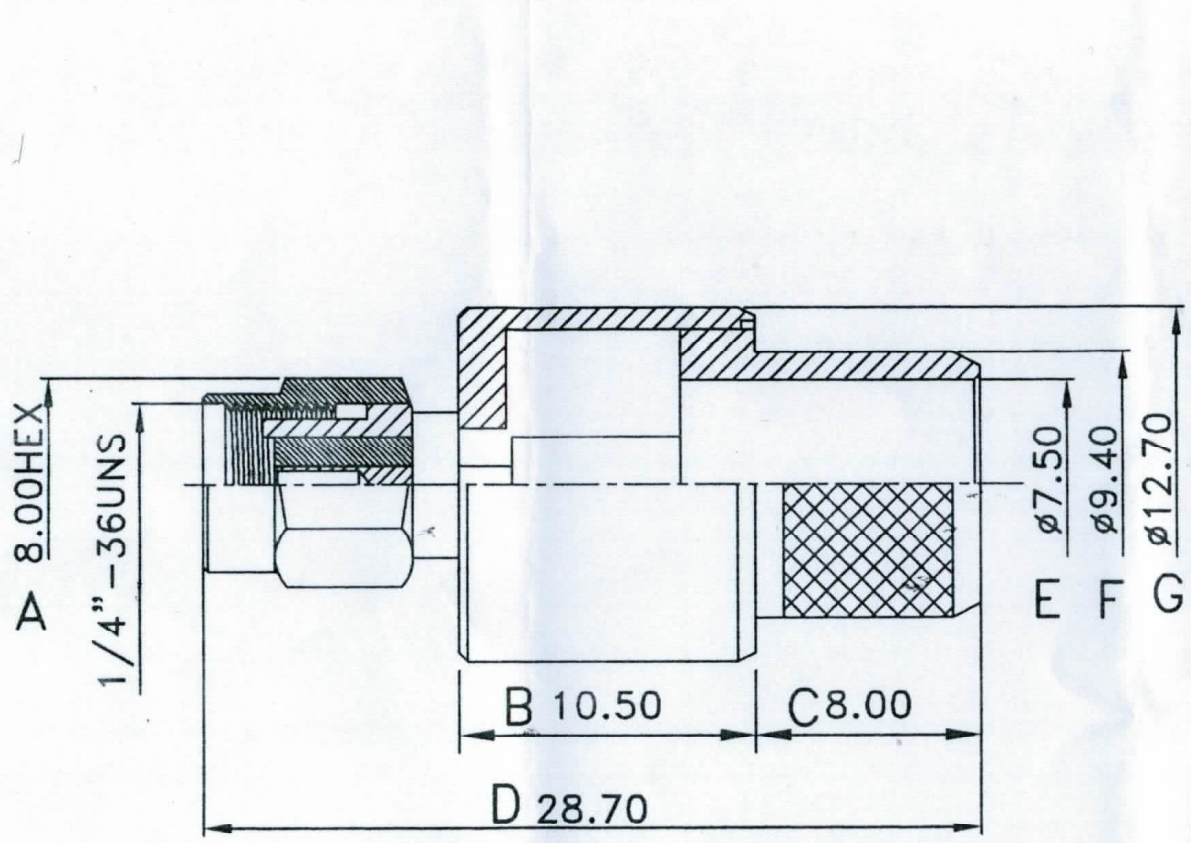


REV	DESCRIPTION	DRAWN	DATE



8	CHASSIS	1	BRASS	NICKEL
7	SHELL	1	BRASS	NICKEL
6	GASKET	1	SILICONE	NONE
5	INSULATOR	1	TEFLON	NONE
4	FERRULE	1	BRASS	NICKEL
3	WASHER	1	SK-5	NONE
2	PIN	1	BRASS	GOLD
1	BODY	1	BRASS	NICKEL
NO	Description	Q'ty	Material	Finish

UNLESS OTHERWISE SPECIFIED  
 1. REMOVE ALL BURRS.  
 2. BREAK ALL CONNERS & EDGES CO.15 MAX.  
 3. CHAMFER 1ST & LAST THREADS 45°.  
 4. DIAMETERS ON COMMON CENTERS.  
 TO BE CONCENTRIC WITHIN 0.1 T.I.R.  
 5. ALL DIMENSIONS ARE AFTER PLATING.

\* MAJOR DIMENSION  
 UNLESS OTHERWISE NOTED TOLERANCES  
 0.5-6=±0.2  
 6-30=±0.4  
 30-120=±0.6  
 120-315=±1.0  
 ANGLES=±1°

APPROVED  
 CHECKED  
 DRAWN  
**VINCENT**  
 DRAWN DATE 04/03/17

TITLE  
**SMA MALE RP CRIMP TYPE**  
 DRAWING NO.  
**SMA-1001-9-B4-RP-TGN**  
 REV **A**  
 SL  
 FILE NO. D:\DWG\SMA MALE CRIMP TYPE\SMA-1001-9-B4-RP-TGN