

Quick Installation Guide

Version: 1.0.1

Copyright

This document is protected by R.O.C. copyright laws and other laws. You may not copy, reproduce, distribute, publish, display, perform, or modify any part of this content in any form or by any means without prior written permission of vendor. You may not alter or remove any copyright or other notice from copies of the content. All other brand and product names are claimed or registered marks of their respective companies or organizations.

All rights reserved.

This Quick Installation Guide (QIG) provides instruction for installation.

This guide also shows you how to connect the device with other Network equipments.

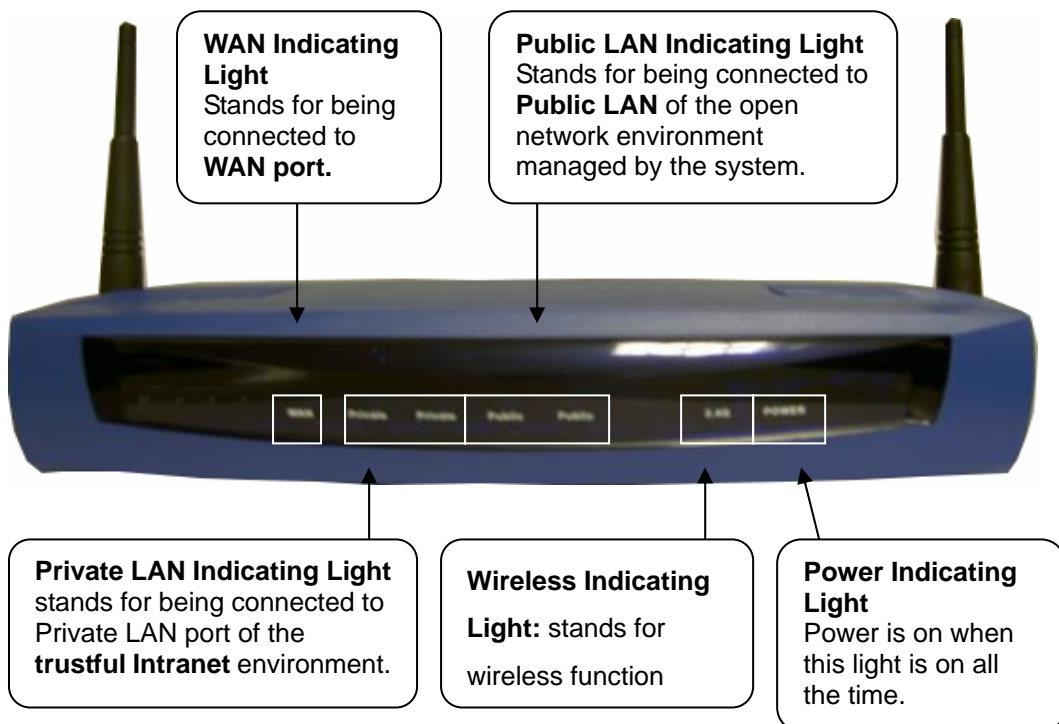
1. Package Contents

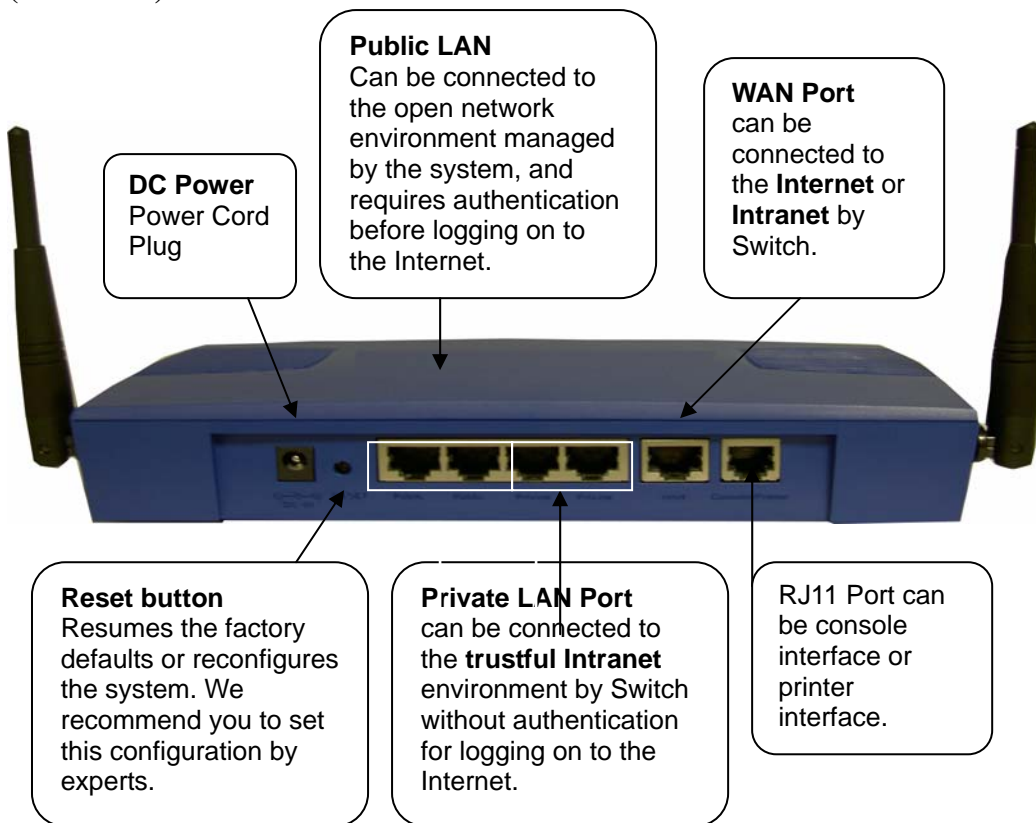
The standard package includes:

- Main system x 1
- CD-ROM (Administrator's Manual and Quick Installation Guide) x 1
- Power adapter x 1
- Ethernet cable x 1
- Console Cable x 1
- Wall - mount

2. Front Panel

(Front Side)



(Back Side)**3. Installation**

Following the following steps:

1. Make sure the power is turned off.

2. Connect the WAN port.

Use the network cable of the 10/100BaseT to connect to the device and the network not managed, such as the ATU-Router of ADSL, port of Cable Modem, or the Switch or Hub on the LAN of a company.

3. Connect the Public LAN.

The Public LAN is used to connect the desired network for management, and all users connected to the Public LAN must login successfully before using the network resources. Use the network cable of the 10/100BaseT to connect to the Switch or Hub of the Authentication,

and then use the network cable of the 10/100BaseT to connect to the Administrator's PC. If it is necessary to connect the PC or wireless AP directly to the Authentication, then we need to use the cross over line.

4. Connect the Private LAN port.

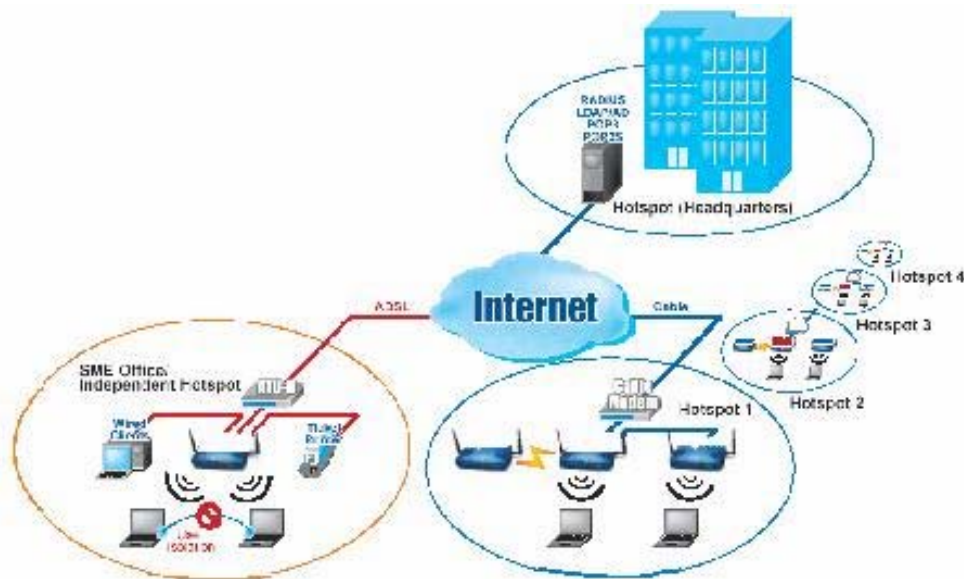
The Private LAN port is used to connect the trustful network. In other words, the computer connected to the Private LAN does not require to login to use the network resources. This port can be used to connect to a Server such as Web Server or a Mail Server, etc. Use the network cable of the 10/100BaseT to connect to the Switch or Hub of the Private LAN, and then use the network cable of the 10/100BaseT to connect to the Administrator's PC. If it is necessary to connect the PC or wireless AP directly to the Private LAN, then we need to use the cross over line.

5. Turn on the power.

Plug the bundled power supply connector into the socket and then turn on the power.

6. Check the LED indicating light.

After the power is on, the power indicating light should be lit. The WAN and indicating lights should be lit when the WAN and ports are properly connected to the network equipment. The corresponding indicating lights also should be lit when the Public LAN and Private LAN ports are properly connected.



4. Quick Installation

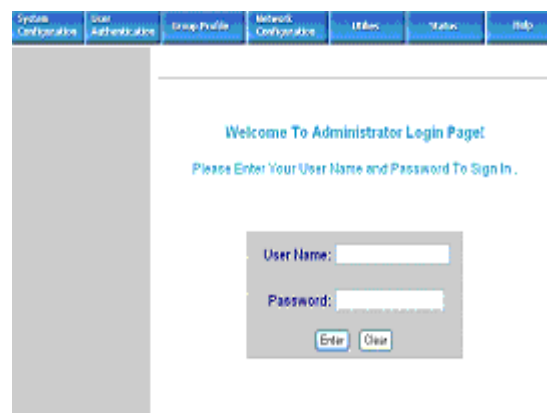
In the following sections, we will guide you step by step to set up a system composed by individual device. This example only provides brief instructions, Please refer to Administrator's Manual "Chapter 5 Web Management Interface" for the detailed description of each function.

1. Opening Browser

After the installation and the foregoing setup is completed, use the network cable of the 10/100BaseT to connect to the Private LAN port, please open the browser (such as Microsoft IE). In the website, enter the administrator's URL such as <https://192.168.2.254>. IF you can't get the login screen, may be you wouldn't obtain an IP address automatically from Private LAN port, please specify an IP address such as **192.168.2.xx** then do it again.

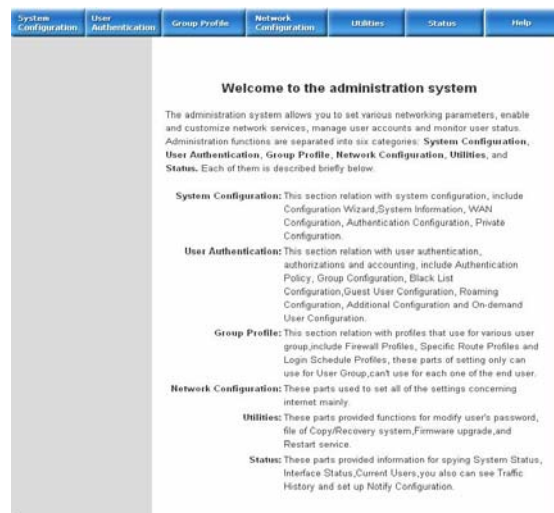
2. Keying in the Administrator's Username and Password

In the opened webpage, you will see the login screen. Please key in "admin" in the Username column, and then "admin" in the Password column. Click "Enter" to login.



3. Simple System Setup

After successfully logging in to the system and entering into the web management interface, you can run the installation wizard to help you complete the setup.



Click **System Configuration** > **Configuration Wizard** and the configuration wizard will appear on the screen. Click **“Run Wizard”** go to next screen.



Step 1. Change Administrator’s Password

The wizard will guide you through the nine steps for completing the setup. Click **“Next”** to go to the next screen.

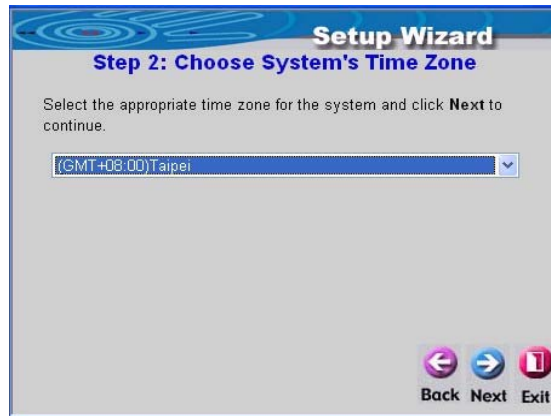


Please enter **New Password** and **Verify Password**. Click **“Next”** to go to next screen.



Step 2. Choose System's Time Zone

Choose your time zone.
Click “**Next**” to go to next screen.



Setup Wizard
Step 2: Choose System's Time Zone

Select the appropriate time zone for the system and click **Next** to continue.

(GMT+08:00)Taipei

Back Next Exit

Step 3. Set System Information

The Succeed Page, External Time Server, and DNS Server will appear after the user login to the system successfully, click “**Next**” to go to the next screen.



Setup Wizard
Step 3: Set System Information

Enter System Information and click **Next** to continue.

Succeed Page http://www.yahoo.com.tw*
(ex. http://www.yahoo.com)

External Time Server tock.usno.navy.mil*
(ex. tock.usno.navy.mil)

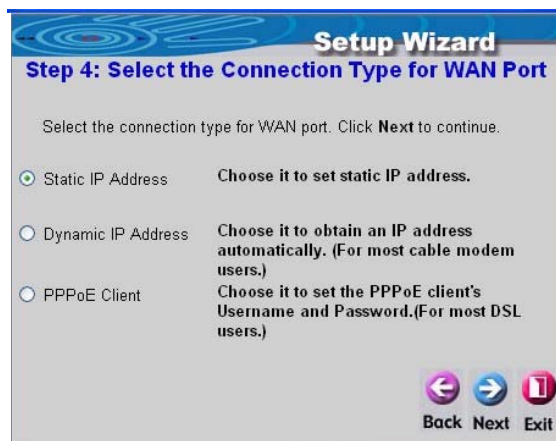
DNS Server 168.95.1.1*

Back Next Exit

Step 4. Set WAN Port Connection Type

Please choose one item. Then click “**Next**” to go to the next screen.

- If you use static IP address, choose **Static IP Address**.
- If you use dynamic IP address, choose **Dynamic IP Address**.
- If you use xDSL, and use PPPoE to connect to the Internet, choose **PPPoE Client**.



Setup Wizard
Step 4: Select the Connection Type for WAN Port

Select the connection type for WAN port. Click **Next** to continue.

Static IP Address Choose it to set static IP address.

Dynamic IP Address Choose it to obtain an IP address automatically. (For most cable modem users.)

PPPoE Client Choose it to set the PPPoE client's Username and Password.(For most DSL users.)

Back Next Exit

• **Static IP Address**

Please enter the IP address, Subnet mask, and Default Gateway information of WAN Port; click **“Next”** to go to the next screen.

Setup Wizard
Step 4: Set WAN Port's Static IP Address

Click **Next** to continue.

IP address:

Subnet mask:

Default gateway:

Back Next Exit

• **Dynamic IP Address**

Click **“Next”** to go to the next screen.

Setup Wizard
Step 4: Select the Connection Type for WAN Port

Select the connection type for WAN port. Click **Next** to continue.

Static IP Address Choose it to set static IP address.

Dynamic IP Address Choose it to obtain an IP address automatically. (For most cable modem users.)

PPPoE Client Choose it to set the PPPoE client's Username and Password.(For most DSL users.)

Back Next Exit

• **PPPoE Connection**

Click **“Next”** to go to the next screen.

Setup Wizard
Step 4: Select the Connection Type for WAN Port

Select the connection type for WAN port. Click **Next** to continue.

Static IP Address Choose it to set static IP address.

Dynamic IP Address Choose it to obtain an IP address automatically. (For most cable modem users.)

PPPoE Client Choose it to set the PPPoE client's Username and Password.(For most DSL users.)

Back Next Exit

Please enter the PPPoE Username and Password. After the setup is completed, click “Next”.

Setup Wizard
Step 4: Set PPPoE Client's Information

Enter the PPPoE Client's information provided by your ISP. Click **Next** to continue.

Username

Password

Step 5. Set Related Information for Public LAN

Configure the parameters of the **Authentication** interface including the IP address, subnet mask, and disable/enable DHCP Server, the default setting is to enable the DHCP Server. Click “Next” to go to next screen.

Setup Wizard
Step 5: Configure Public Port

Configure Public port's information. Click **Next** to continue.

IP Address

Subnet Mask

Disable DHCP Server

Enable DHCP Server

Enable Authentication Port's DHCP Server.

Set the start IP address, end IP address, domain name, preferred DNS server, alternate DNS Server of the DHCP. Click “Next” to go to next screen.

Setup Wizard
Step 5: Set Public Port's DHCP Server

DHCP settings. Click **Next** to continue.

DHCP Scope

Start IP Address

End IP Address

Domain Name

Preferred DNS Server

Alternate DNS Server

Step 6. Set Wireless-Access Point Connection

Entry your **SSID**, select **Channel** and **AP mode**.

Setup Wizard
Step 6: Set Wireless - Access Point Connection

Enter in the SSID name and Channel number to be used for the Wireless Access Point. Click **Next** to continue.

SSID: *

Channel: Dynamic

AP Mode:

Step 7. Configuration Wireless Port

Configure the parameters of the **Wireless Port** interface including the IP address, subnet mask, and disable/enable DHCP. Click **Next** to go to next screen.

Setup Wizard
Step 7: Configuration Wireless Port

Configure Wireless port's information. Click **Next** to continue.

IP Address: *

Subnet Mask: *

Disable DHCP Server

Enable DHCP Server

Step 8. Restart

After the setup is completed, the basic configuration has been completed. Click **Restart** to restart the machine.

Setup Wizard
Step 8: Restart

The Setup Wizard has completed. Click on **Back** to modify changes or mistakes. Click **Restart** to save the current settings and reboot the 11g HotSpot Router.

5. Accessing External Network from Authentication (Public LAN)

If all the steps are set properly so far, we can further connect the device to the managed network to experience the controlled network access environment. Firstly, connect a user-end device to the network at the device Authentication, and set the dynamic access network. After the network address is obtained at the user end, open an Internet browser, and link to any website. Then, the default login webpage will appear in the Internet browser.

For general user:

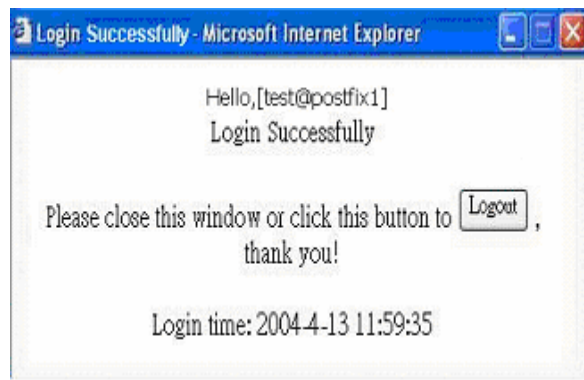
Key in the previously created username and password in this interface.

Both username and password are “test”. And then click on the “**Enter**” button.



 A login form with a light gray background and a blue border. It contains two input fields: "Username:" with the text "test" and "Password:" with four black dots. Below the fields are three buttons: "Enter", "Clear", and "Remaining".

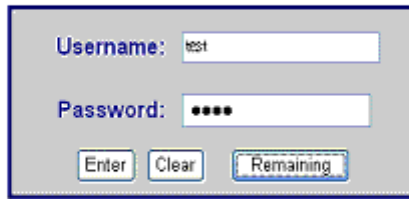
You have just completed the setup and allowed it to provide you with a managed network environment. This user can also browse the webpage on the Internet.



Attention:

Nevertheless, if you are not on-demand user, please do not click on “**Remaining**”, because the following error window will appear.

User Login Page



The image shows a user login form with a blue border. It contains two input fields: "Username:" with the text "test" and "Password:" with four asterisks. Below the fields are three buttons: "Enter", "Clear", and "Remaining". The "Remaining" button is highlighted with a blue border.

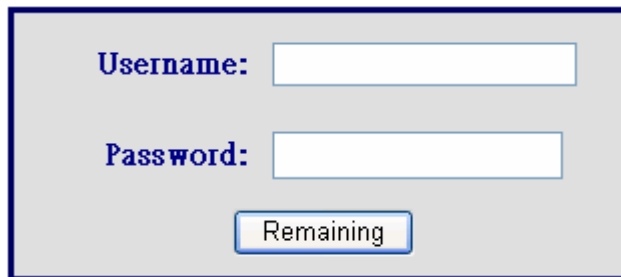
Sorry, this feature is available for on-demand user only.

For On-demand user:

The following is the successfully login page for on-demand user. There is an extra function, the “**Redeem**” button, that user can add credit in the current account if the remaining usage is considered to be insufficient.



After user has paid the redeem cost at counter, he/she will get another username and password, by key in this information in the appropriate window, the system will merge the two identities and the available usage.



This window will show the remaining hours or data size for user’s online access. When user click

