

## AirLink Smart In Wall PoE AP User manual



### Product Introduction

**AirLink Smart In Wall PoE AP** is a PoE Wall plug wireless AP advanced IEEE 802.11b/g/n wireless standard, and provide wireless speed up to 150Mbps. It also support standard 802.3af PoE interface for both electricity and traffic transmission. Multiple wireless security systems are supported: WEP, WPA, WPA2, WPA-PSK and WPA2-PSK to keep your network far away from intrusions and attacks. It can widely be used for home, hotel, school and hospital with an easy and convenient installation.

#### Features:

- \* Complies with 2.4GHz IEEE802.11n, IEEE 802.11g and IEEE 802.11b standard
- \* Supports Fat AP and Fit AP mode. Working in Fit mode, it can be centralized managed
- \* High transmission speed up to 150Mbps
- \* Support IEEE802.3af PoE power supply works in standard PoE switch
- \* Supports 64/128-bit WEP, WPA-PSK, WPA2-PSK wireless security
- \* User-friendly Web management interface
- \* It can be installed into a standard 86\*86mm socket

Front Panel:



Rear Panel:



Phone Conector    Lan Conector

- ◆ Please plug Ethernet cable into the WAN port to PoE Switch
- ◆ Phone connector on the back panel is for phone line connection, it can be used according to actual usage.

### Location and Environment Precaution:

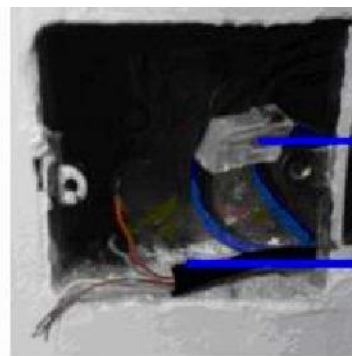
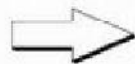
As with any electric device, you should place the AP where it will not be subjected to extreme temperatures, humidity, or electromagnetic interference. Specifically, the site you select should meet the following requirements:

- \* The ambient temperature should be between 32 and 104 degrees Fahrenheit (0 to 40 degrees Celsius).
- \* Please don't install the device near water, or let any liquid splashes into it.
- \* Make sure that the AP receives adequate ventilation. Do not install it near any heat or strong electromagnetic interference source.
- \* Always avoid dust and dirt.

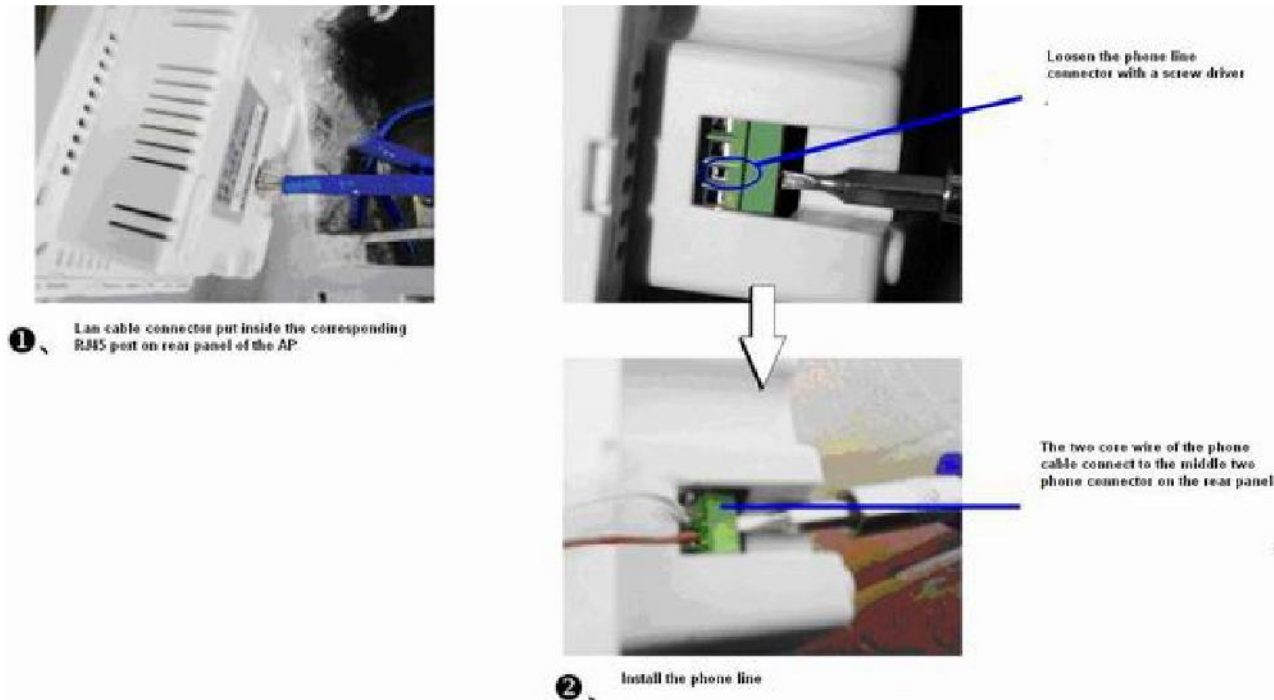
### Standard 86 socket:



1. 86 Socket on the wall



2. The Lan cable and phone cable connect to the corresponding port on rear panel of the AP



Loosen the phone connector on the AP rear panel with a screw driver, put inside the phone line cable to proper position and then fasten the connector. The two phone line core wire should connect to the two middle connector on the AP.

**Install the AP into the 86 socket:**



L Pls dismantle the cover case of the AP before install it into the socket.

Finish installation:



1 Install the frame panel into the AP



Fasten Clasp



2 Finish installation

## Specification:

Chipset solution	CPU: AR9331 RF: AR9331		
Standards	IEEE802.3u MDI / MDIX 10/100Mbps IEEE802.11b/g/n		
DDR	32Mbyte DDR2		
Flash	8Mbyte SPI FLASH		
Power supply	IEEE802.3af standard POE		
CPU Frequency	400MHz		
Antenna	Internal 2dBi		
RF settings	1x1 (1Tx,1 Rx)		
Interface ports	2 10/100Mbps Base Ethernet Port ( with Auto MDI / MDIX) 1 RJ11 connector		
Ethernet speed	10/100Mbps		
Reset button	Reset to factory default		
LED indicator	Power, WAN, WLAN		
Wireless speed	11b: 11M, 5.5M, 2M, 1Mbps 11g: 54M, 48M, 36M, 24M, 18M, 12M, 9M, 6Mbps 11n:6.5M, 13M, 13.5M,19.5M, 26M,27M, 39M, 40.5M,52M, 54M,58.5M, 65M,81M,108M,121.5M,135M,150Mbps		
Transmission mode	DSSS		
Modulation mode	OFDM/BPSK/QPSK/CCK/DQPSK/DBPSK		
RF frequency	2412 GHz ~ 2472GHz (channel1 ~ 13)		
Power consumption	<5W		
RF power@25°C (±2dB)	200mW		
Sensitivity	IEEE 802.11b 1Mbps≤-95 dBm 11Mbps≤-8 9dBm	IEEE 802.11g 6Mbps≤-92dBm 54Mbps≤-73dBm	IEEE 802.11n HT 20 MCS 0≤-86dBm MCS 7≤-68dBm HT 40 MCS 0≤-83dBm MCS 7≤-65dBm



Physical specification	
Dimensions	86mmx86mmx48mm standard wall plug socket design
Weight	≤500g
Environment requirement	
Operation temperature	-10~+45°C
Operation humidity (non-condensing)	10%~90% RH
Storage temperature	-40~+85°C
Storage humidity (non-condensing)	10%~90% RH
Environmental standards	RoHs compliance