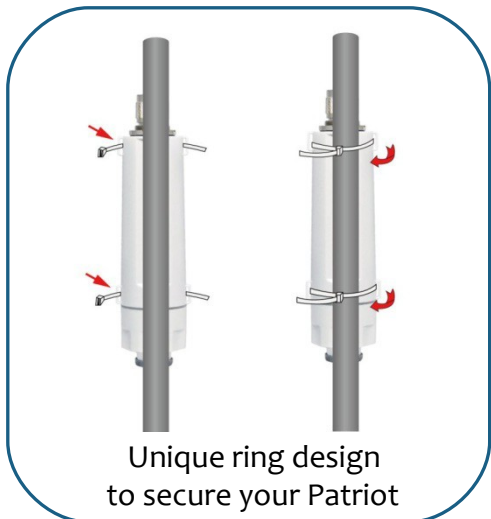


Patriot-2H

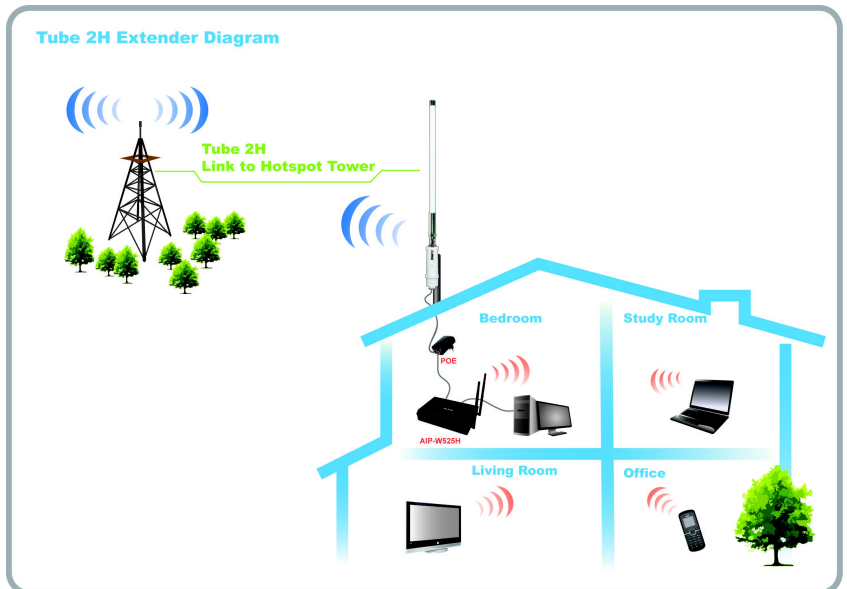
802.11n Long-Rang Outdoor AP/CPE



Patriot-2H is the 802.11n 2.4GHz Outdoor Application AP/CPE. Tube2H come with N type male connector for various antenna use for different environment. The Patriot also supports passive PoE allowing easy installation without any environment limitation.



Unique ring design to secure your Patriot



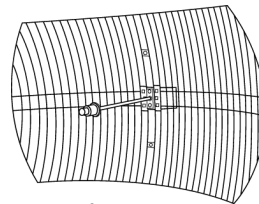
Patriot-2H

802.11n Long-Rang Outdoor AP/CPE

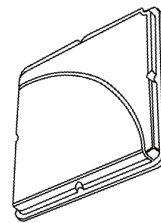
Specification:

Standard	IEEE 802.11n, IEEE 802.11bg(mixed mode)
Chipset	Atheros AR9331
Frequency Band	2.4GHz ISM Band
Data Rate	802.11bg: Up to 54Mbps 802.11n: Up to 150Mbps
LED indicators	Power /Link/Ethernet/Signal
Ethernet interface	One 10/100 BASE-T RJ-45 Ethernet connector
Transmitter Power	Up to 500mW
Receive Sensitivity	-91dBm@802.11n -95dBm@802.11bg
Antenna	N-male external antenna connector
Security	Wired Equivalent Privacy (WEP) data encryption Dynamic WEP key exchange WEP64/128, WPA, WPA2 802.1x
Power	PoE 12V / 1A (Support up to 18V)
Operating Temperature	-20°C ~ 65 °C
Storage Temperature	-10°C ~ 70 °C
Humidity	5~90% (non-condensing)

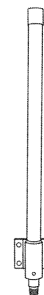
Support Various Outdoor Antenna



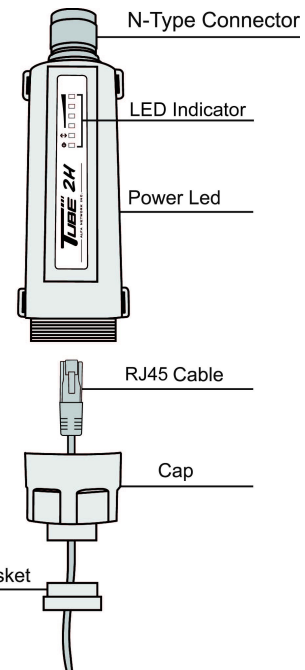
Grid Antenna



Panel Antenna



Omni Antenna



Accessory included : PoE 12VDC & Plastic Straps

