

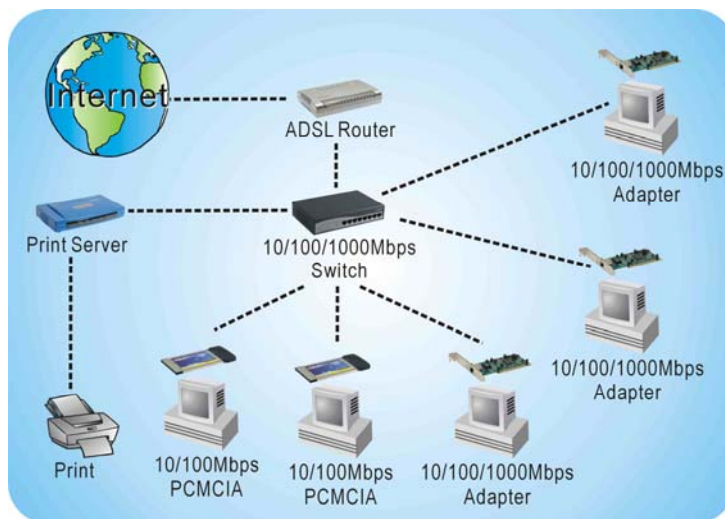


SW-04DCG

4-Port Giga Switch / Copper, 11" Desk-Top

PheeNet SW-04DCG provides 4 RJ45 Auto-negotiation Gigabit Ethernet ports. It also features IEEE 802.3ab 1000BASE-T Gigabit Ethernet and supports Auto MDI/MDI-X for each port. SW-04DCG supports Gigabit Ethernet data rate up to 2000 Mbps in Full duplex and Store-and-Forward switching method. It's 256 K byte RAM for data buffering and IEEE 802.3x flow control for full duplex provide user easier management of the network connection. For Home user and small enterprises, it is beyond doubt that SW-04DCG is one powerful and budget-saving LAN Smart Switch.

APPLICATION



Features

1. 4 x 10/100/1000Mbps Auto-negotiation Gigabit Ethernet ports
2. Auto MDI/MDI-X for each port
3. IEEE 802.3x flow control for full-duplex
4. Back pressure flow control for half-duplex
5. Support Full/Half duplex transfer mode for 10 and 100Mbps
6. Supports 8K absolute MAC addresses
7. Supports 256K Bytes RAM for data buffering
8. Extensive front-panel diagnostic LEDs

Specification

Industrial Standard	
Standard	IEEE 802.3 10BaseT Ethernet
	IEEE 802.3u 100BaseTX Fast Ethernet
	IEEE 802.3ab 1000Base-T
	IEEE 802.3x Flow Control
Interface	4 x 10/100/1000Base-TX Auto-MDI/MDI-X ports with Fast Ethernet
Network Media	Ethernet:2-pair UTP Cat.3,4,5,up to 100M
	Fast Ethernet:2-pair UTP Cat.5,up to 100M
	Gigabit Ethernet:4-pair UTP Cat.5 , up to 100M
Data Transfer Rate	Ethernet: 10Mbps(Half-duplex) 20Mbps(Full-duplex) Fast Ethernet: 100Mbps (Half-duplex) 200Mbps (Full-duplex) Gigabit Ethernet:2000Mbps(Full-duplex)
Transmission Method	Store-and-forward
Hardware& Software:	
Management	Web based
RAM Buffer	256K Bytes t
Filtering Address Table	8k entries per device
Environment	Temperature operating: 0 to 40° C
	Temperature storage: -10 to 70° C
	Humidity: 5% ~ 95% non-condensing
Power Supply	100 - 240VAC 50/60Hz, Internal Universal Switching Power
Power Consumption	15W maximum
LED Indicators	Per Unit: Power, System Per Fast Ethernet Port: Link/ACT, 100M Per Copper Gigabit Port: Link/ACT, 1000M, 100M
Dimensions	180(L)×280(W)×44(H) mm
Certificate	FCC, CE

PheeNet Technology Corp.

Rm. 3, 20F, NO. 79, Hsin Tai Wu Rd., Sec. 1,
Hsi-Chih, Taipei, Taiwan
<http://www.pheenet.com>
TEL:886-2-26982011 FAX:886-2-26981421

