



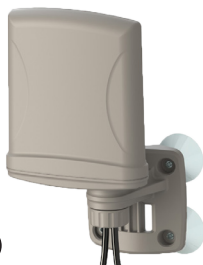
Quick Guide

for GSM/LTE, RFID and WIFI Antennas



www.poynting.tech

XPOL - 1



Frequency:	790-960, 1710-2700 MHz
Max Gain:	4dBi - Omni Directional
Polarisation:	+45° and -45°
Size (LxWxD):	215mm x 135mm x 85mm

XPOL - 10



Frequency:	690-2700 MHz
Max Gain:	6dBi - Omni Directional
Polarisation:	+45° and -45°
Size (LxWxD):	150mm x 150mm x 15mm

MIMO - 1



Frequency:	698-960, 1710-2700 MHz
Max Gain:	3.5dBi - Omni Directional
Polarisation:	Linear Vertical
Size (LxWxD):	252mm x 172mm x 55mm

XPOL - 2



M2M



Frequency:	698-2700 MHz
Max Gain:	9dBi - Directional
Polarisation:	Vertical & Horizontal
Size (LxWxD):	255mm x 255mm x 80mm

XPOL - 6 - 10m



M2M



Frequency:	1710-2700 MHz
Max Gain:	11dBi - Directional
Polarisation:	+45° and -45°
Size (LxWxD):	300mm x 145mm x 57mm

XPOL - 16



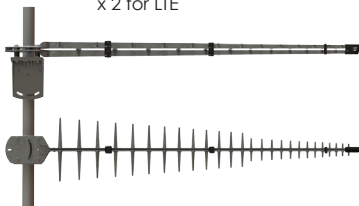
M2M



Frequency:	450-470, 790-860, 1710-2170 MHz
Max Gain:	8dBi - Directional
Polarisation:	+45° and -45°
Size (LxWxD):	350mm x 350mm x 90mm

LPDA - 92

x 2 for LTE



M2M((☺☺☺))

Frequency:	698-3000 MHz
Max Gain:	12dBi - Directional
Polarisation:	Linear - BRKT 30 for Horizontal
Size (LxWxD):	1100mm x 180mm x 60mm

LTE

OMNI - 39

M2M((☎))

LoRa



Frequency:	790-960, 1710-2700 MHz
Max Gain:	2.3dBi - Omni Directional
Polarisation:	Linear Vertical
Size (LxWxD):	150mm x 60mm x 40mm

OMNI - 69

M2M((☎))

LoRa



Frequency:	790-960, 1710-2700 MHz
Max Gain:	7dBi - Omni Directional
Polarisation:	Linear Vertical
Size (LxWxD):	485mm x 75mm x 75mm

OMNI - 85

M2M((☎))

LoRa



Frequency:	690 - 2700 MHz
Max Gain:	6dBi - Omni Directional
Polarisation:	Linear Vertical
Size (LxWxD):	210mm x 20mm x 14mm

OMNI - 121



M2M((☉))

Frequency:	690-960, 1710-2700, 2500-2700 MHz
Max Gain:	6dBi - Omni Directional
Polarisation:	Linear Vertical
Size (LxWxD):	555mm x 50mm x 50mm

OMNI - 232



M2M((☉))

Frequency:	795-960, 1710-217, 2300-2400, 2500-2700 MHz
Max Gain:	5dBi - Omni Directional
Polarisation:	Linear Vertical
Size (LxWxD):	102mm x 32mm

OMNI - 291



M2M((☉))

Frequency:	450-470, 690-960, 1710-2700 MHz
Max Gain:	7dBi - Omni Directional
Polarisation:	Linear Vertical
Size (LxWxD):	560mm x 75mm

OMNI - 275



M2M((☺))

Frequency:	452-468, 790-960, 1710-2700 MHz
Max Gain:	7dBi - Omni Directional
Polarisation:	Linear Vertical
Size (LxWxD):	485mm x 75mm x 75mm

GSM

OMNI - 50

WIFI 



Frequency:	2400-2500 MHz
Max Gain:	7.5dBi - Omni Directional
Polarisation:	Vertical
Size (LxWxD):	570mm x 50mm x 50mm

HELI - 4

WIFI 



Frequency:	2400 - 2500 MHz
Max Gain:	15dBi - Omni Directional
Polarisation:	Circular
Size (LxWxD):	405mm x 110mm x 130mm

WLAN - 38

WIFI 



Frequency:	2300 - 2700 MHz
Max Gain:	16dBi - Omni Directional
Polarisation:	Linear
Size (LxWxD):	240mm x 240mm x 60mm

WLAN - 59



Frequency:	5100-5900 MHz
Max Gain:	19dBi - Directional
Polarisation:	Dual Linear
Size (LxWxD):	240mm x 240mm x 60mm

HELI - 8



Frequency:	2400 - 2500 MHz
Max Gain:	14dBi - Omni Directional
Polarisation:	Circular
Size (LxWxD):	2050mm x 140mm x 140mm

HELI - 3



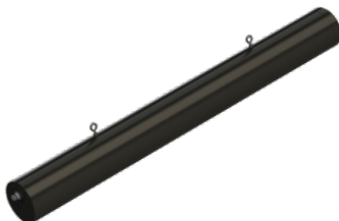
Frequency:	2400 - 2500 MHz
Max Gain:	17.5dBi - Omni Directional
Polarisation:	Right hand circular
Size (LxWxD):	1050mm x 150mm x 120mm

HELI - 8IS



Frequency:	2400 - 2500 MHz
Max Gain:	14dBi - Omni Directional
Polarisation:	Circular
Size (LxWxD):	2050mm x 140mm x 140mm

HELI - 3IS



Frequency:	2400 -2500 MHz
Max Gain:	17.5dBi - Omni Directional
Polarisation:	Right hand circular
Size (LxWxD):	1050mm x 150mm x 120mm

OMNI - 50IS



Frequency:	2400-2500 MHz
Max Gain:	7.5dBi - Omni Directional
Polarisation:	Vertical
Size (LxWxD):	570mm x 50mm x 50mm

PATCH - 25

RFID

LoRa



Frequency:	860 - 960 MHz
Max Gain:	9dBi - Directional
Polarisation:	Circular
Size (LxWxD):	250mm x 250mm x 40mm

PATCH - 26

RFID

LoRa



Frequency:	820 - 970 MHz
Max Gain:	8dBi - Directional
Polarisation:	Linear
Size (LxWxD):	250mm x 250mm x 40mm

BRKT - 39



Heavy Duty Stainless Steel Marine Mount Antenna Bracket

for OMNI 291

BRKT - 38



Heavy Duty Stainless Steel Marine Ratchet Rail Mount Antenna Bracket

for OMNI 291

BRKT - 37



Heavy Duty Stainless Steel Marine Flat Mount Antenna Bracket

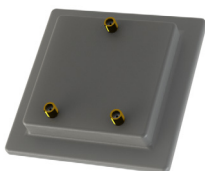
for OMNI 291

BRKT - 30



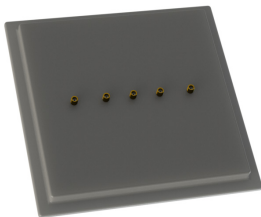
Heavy Duty Mounting Bracket	
for 2 x LPDA 92	

SPLT - 14



Frequency:	628-2700 MHz
Max Gain:	N/A
Polarisation:	N/A
Size (LxWxD):	90mm x 90mm x 40mm

SPLT - 13



Frequency:	690-960, 1710-1880 MHz
Max Gain:	N/A
Polarisation:	N/A
Size (LxWxD):	150mm x 165mm x 20mm

South Africa

Unit 4, N1 Industrial Park
Landmarks Ave
Samrand, 0157,
South Africa
Tel: +27 12 657 0050
info@poynting.tech

Europe

Kronstadter Straße 4,
81677 München
Germany
Tel: +49 89 2080 265 38
Mob.: +49 176 529 733 50
sales-europe@poynting.tech

