



Easy Start Guide

85Mbps HomePlug

© Copyright 2007 All rights reserved.

No part of this document may be reproduced, republished, or retransmitted in any form or by any means whatsoever, whether electronically or mechanically, including, but not limited to, by way of photocopying, recording, information recording, or through retrieval systems without the express written permission. We reserve the right to revise this document at any time without the obligation to notify any person and/or entity. All other company or product names mentioned are used for identification purposes only and may be trademarks of their respective owners.

LIMITATION OF LIABILITY AND DAMAGES

THE PRODUCT AND THE SOFTWARES WITHIN ARE PROVIDED "AS IS," BASIS. THE MANUFACTURER AND MANUFACTURER'S RESELLERS (COLLECTIVELY REFERRED TO AS "THE SELLERS") DISCLAIM ALL WARRANTIES, EXPRESS, IMPLIED OR STATUTORY, INCLUDING WITHOUT LIMITATION THE IMPLIED WARRANTIES OF NON-INFRINGEMENT, MERCHANTABILITY OR FITNESS FOR A PARTICULAR PURPOSE, OR ANY WARRANTIES ARISING FROM COURSE OF DEALING, COURSE OF PERFORMANCE, OR USAGE OF TRADE. IN NO EVENT WILL THE SELLERS BE LIABLE FOR DAMAGES OR LOSS, INCLUDING BUT NOT LIMITED TO DIRECT, INDIRECT, SPECIAL WILLFUL, PUNITIVE, INCIDENTAL, EXEMPLARY, OR CONSEQUENTIAL, DAMAGES, DAMAGES FOR LOSS OF BUSINESS PROFITS, OR DAMAGES FOR LOSS OF BUSINESS OF ANY CUSTOMER OR ANY THIRD PARTY ARISING OUT OF THE USE OR THE INABILITY TO USE THE PRODUCT OR THE SOFTWARES, INCLUDING BUT NOT LIMITED TO THOSE RESULTING FROM DEFECTS IN THE PRODUCT OR SOFTWARE OR DOCUMENTATION, OR LOSS OR INACCURACY OF DATA OF ANY KIND, WHETHER BASED ON CONTRACT, TORT OR ANY OTHER LEGAL THEORY, EVEN IF THE PARTIES HAVE BEEN ADVISED OF THE POSSIBILITY OF SUCH DAMAGES. THE ENTIRE RISK AS TO THE RESULTS AND PERFORMANCE OF THE PRODUCT OR ITS SOFTWARE IS ASSUMED BY CUSTOMER. BECAUSE SOME STATES DO NOT ALLOW THE EXCLUSION OR LIMITATION OF LIABILITY FOR DAMAGES, THE ABOVE LIMITATION MAY NOT APPLY TO THE PARTIES. IN NO EVENT WILL THE SELLERS' TOTAL CUMULATIVE LIABILITY OF EACH AND EVERY KIND IN RELATION TO THE PRODUCT OR ITS SOFTWARE EXCEED THE AMOUNT PAID BY CUSTOMER FOR THE PRODUCT.

Contents

About the Product	4
Package Contents	4
Device Design	5
Getting Started.....	6
Planning your Network	7
Local Network	7
Gaming Network.....	7
Entertainment Network	8
Media Network	8
Connecting the Device.....	9
About PowerPacket Utility	10
System Requirements	10
Installation	10
Main	11
Privacy.....	13
Quality of Service	15
Diagnostics	16
About.....	17

About the Product

HomePlug Turbo is a device that utilizes the existing electrical wiring in the house as a path to create a secured network of computers and Ethernet devices. HomePlug Turbo does not require a device driver to work. With a maximum data rate of 85 Mbps, HomePlug Turbo can reliably provide Internet connection among linked devices.

HomePlug Turbo is operating system independent. This means it can be used in Windows, Macintosh, or Linux operating systems immediately out of the box. However, to manage and monitor the device, you will need PowerPacket Utility, a Windows-based software application. The primary use of PowerPacket Utility is for changing the Private Network Name. Private Network Name serves as a key that allows HomePlug Turbo to communicate with other HomePlug 1.0 and HomePlug Turbo devices using the same Private Network Name. *HomePlug* is the default Private Network Name. You can use PowerPacket Utility to change the Private Network Name of your HomePlug devices.

Package Contents

The package contains the following items:

- 1 HomePlug Turbo for Single Pack or 2 HomePlug Turbo's for Twin Pack
- 1 Network cable for Single Pack or 2 network cables for Twin Pack
- Resource CD
- Easy Start Guide

Device Design

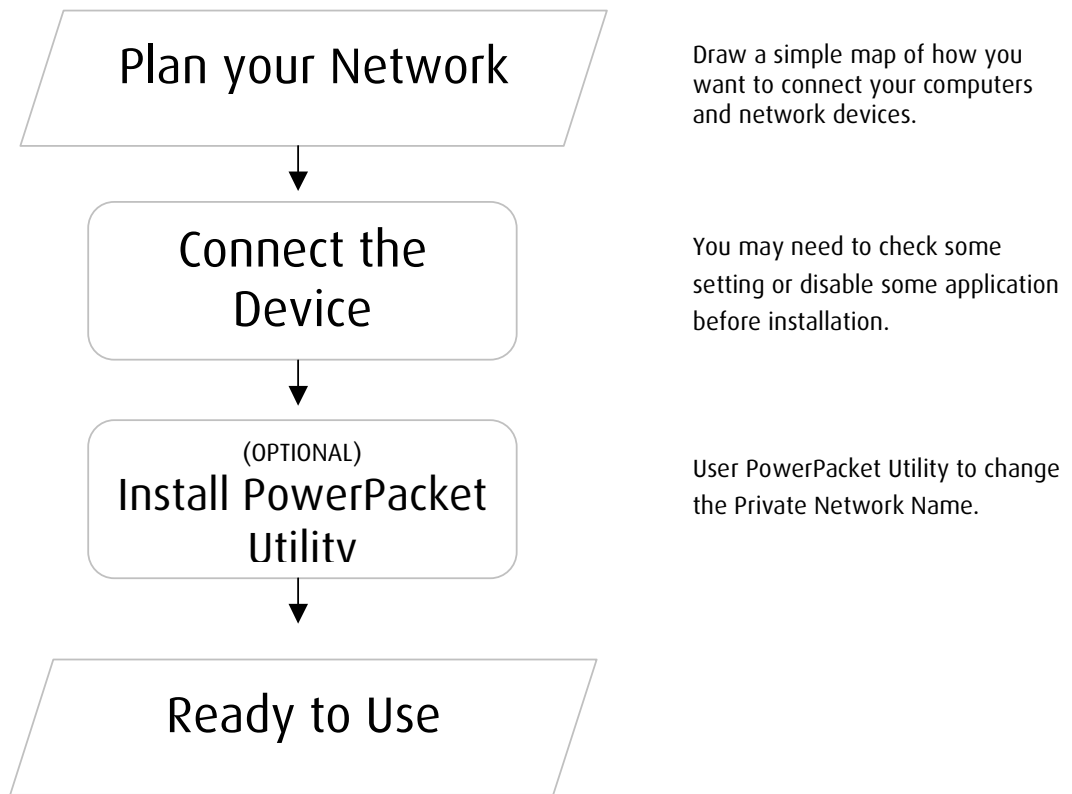
HomePlug Turbo has three LED indicators and an Ethernet port.



Label	Status	Description/ Function
PWR	On/Off	Power is on/off.
PL-ACT	On/Off	Another HomePlug is detected/not detected
	Flashes	Data is being transmitted.
ETH-LINK/ACT OFF	On/Off	Ethernet is connected/not connected.
	Flashes	Sending/receiving data.
Ethernet Port		Accepts either cross or straight cable.

Getting Started

Setting up the device is easy. The flowchart below provides an outline of the steps needed to complete the installation. Brief descriptions appear beside each step. Detailed instructions are provided in the subsequent pages.

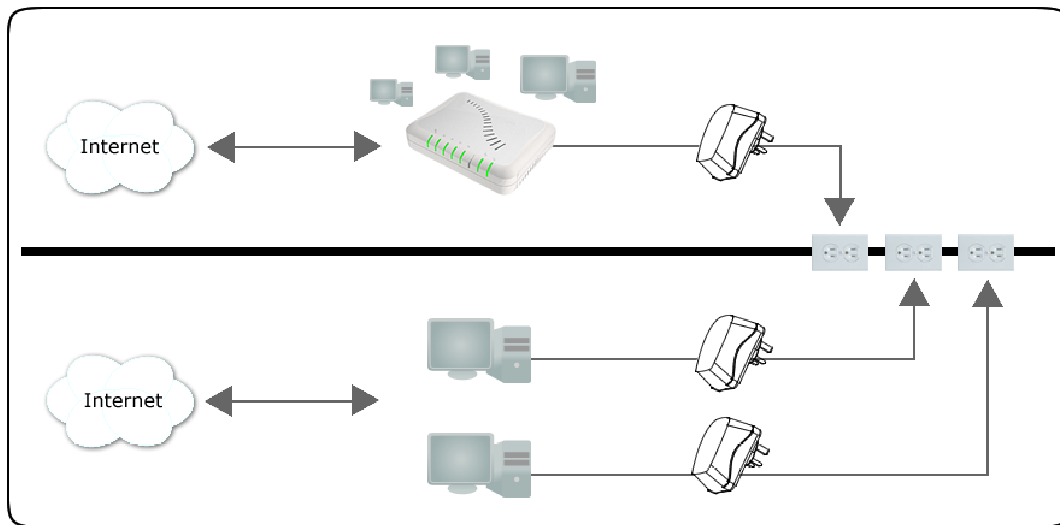


Planning your Network

Here are ideas on how you can use HomePlug Turbo.

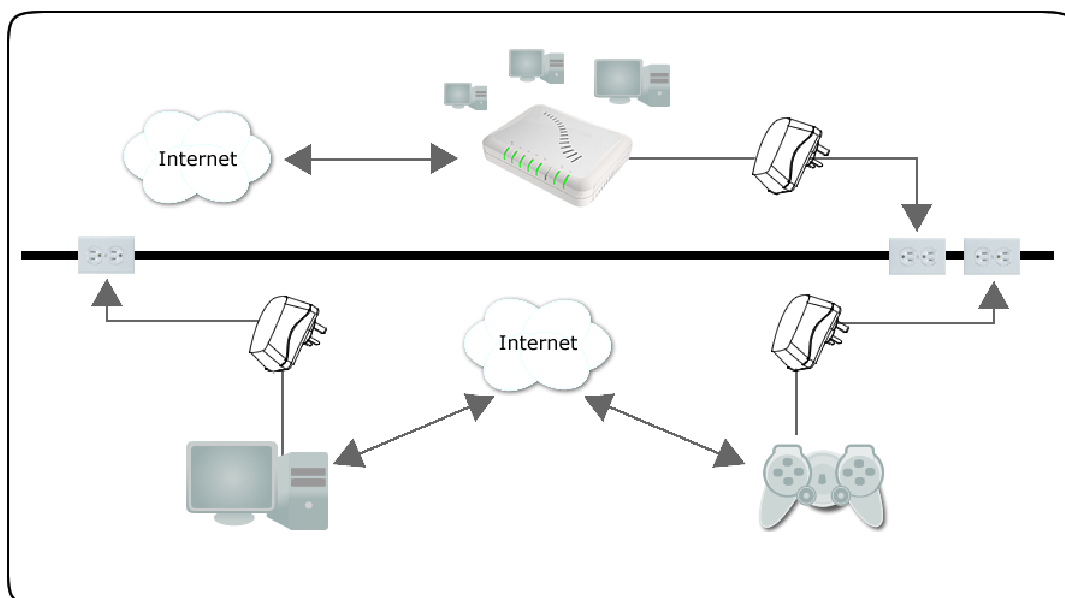
Local Network

Share Internet connection with any computer wherever it is in the house.



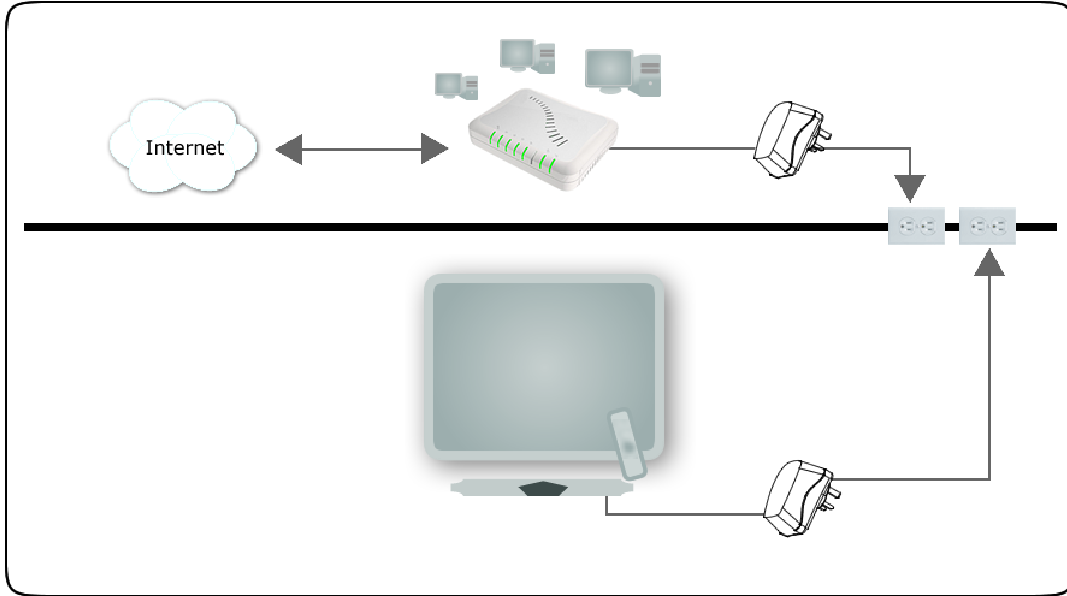
Gaming Network

Connect your gaming console into the Internet and compete with other online players.



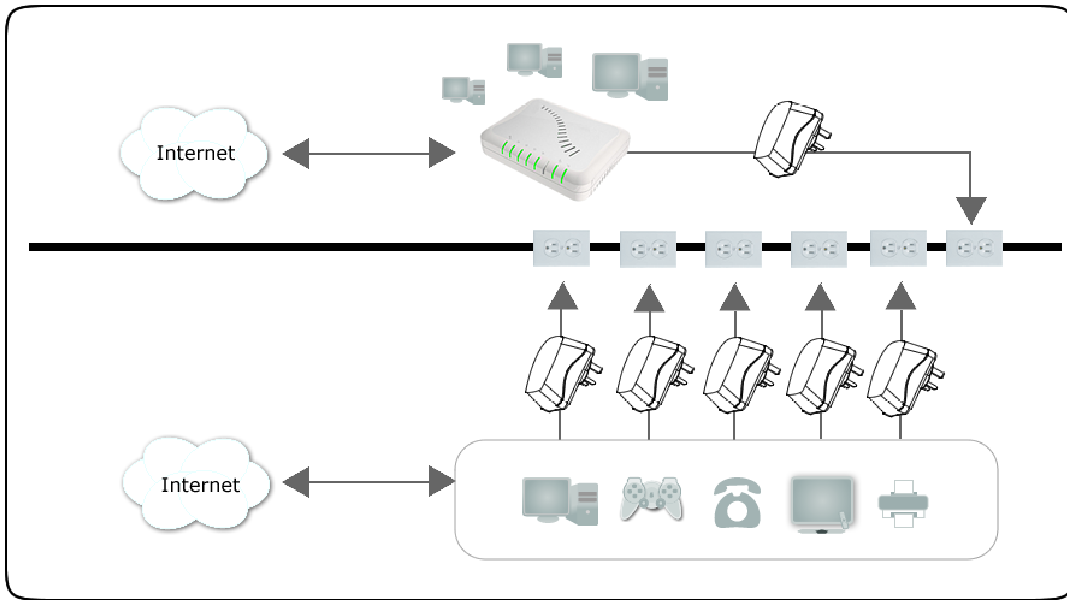
Entertainment Network

Watch and listen to your media files using your entertainment system.



Media Network

Realize your high-tech lifestyle by converging your IP devices into a single network.



Connecting the Device

HomePlug Turbo does not require the installation of a device driver. It is a plug-and-play device that can be used right after connecting the network cables and plugging it into a power outlet.

To connect HomePlug Turbo with your computer:

1. Insert one end of the network cable into your computer's Ethernet port.
2. Insert the other end of the network cable into HomePlug Turbo.
3. Plug HomePlug Turbo into a power outlet.

About PowerPacket Utility

PowerPacket Utility is a Windows-based software application used to manage and monitor the activity of HomePlug devices.

System Requirements

Your computer must meet the following requirements:

- Windows 98SE Me, 2000, XP (32 and 64 bit), or Vista (32 and 64 bit)
- Pentium III 300 MHz MMX-Compatible PC or greater
- 128MB hard disk space and memory
- CD-ROM drive


Installation

To install:

1. Insert the Resource CD that comes with HomePlug Turbo into the CD-ROM drive.
2. Click the Start button, then click Run.
3. In the Run dialog box, type D:\Setup.exe (where D: is your CD-ROM drive), and then click OK.
4. Follow the instructions on the Utility.

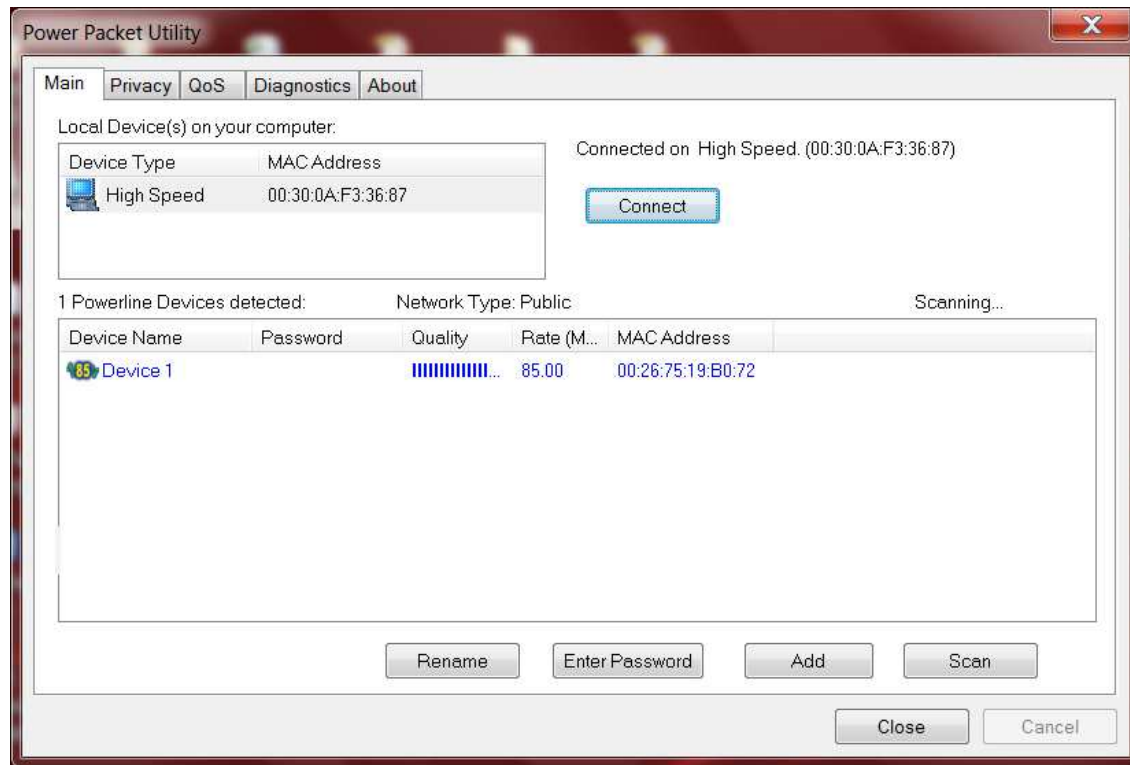
Opening PowerPacket Utility

Two ways to open PowerPacket Utility:

- Click the Start button, click All Programs, click PowerPacket, click PowerPacket Ethernet Adapter, and then click PowerPacket Utility.
- Right-click the PowerPacket Utility desktop icon  and then select Open.

Main



The Main tab displays local and remote HomePlug devices that are active in the network. The top portion displays the local device which pertains to the HomePlug that is directly connected to the computer. The bottom portion displays a table of all remote HomePlugs with their Device Name, Password, Quality, Rate, and MAC Address.



Main Screen

Note: The Main tab displays remote HomePlug devices using the same Private Network Name as the local HomePlug.

An icon represents each remote HomePlug. These icons include:

-  - Refers to low speed HomePlug 1.0 devices
-  - Refers to high speed HomePlug Turbo devices

To connect to a local HomePlug:

1. Select a HomePlug listed in Local Devices on your computer.
2. Click Connect. After connection, a message showing the HomePlug MAC Address is displayed on top of the Connect button.

To change the device name:

1. Select a remote HomePlug.
2. Click Rename.
3. Enter the new name.

To enter the device password:

1. Select a remote HomePlug.
2. Click Enter Password.
3. Enter the Device Password. The Device Password is printed on the sticker label on the HomePlug itself.

To add devices in the list:

1. Click Add. This opens Add Device to Network.



Add Device To Network

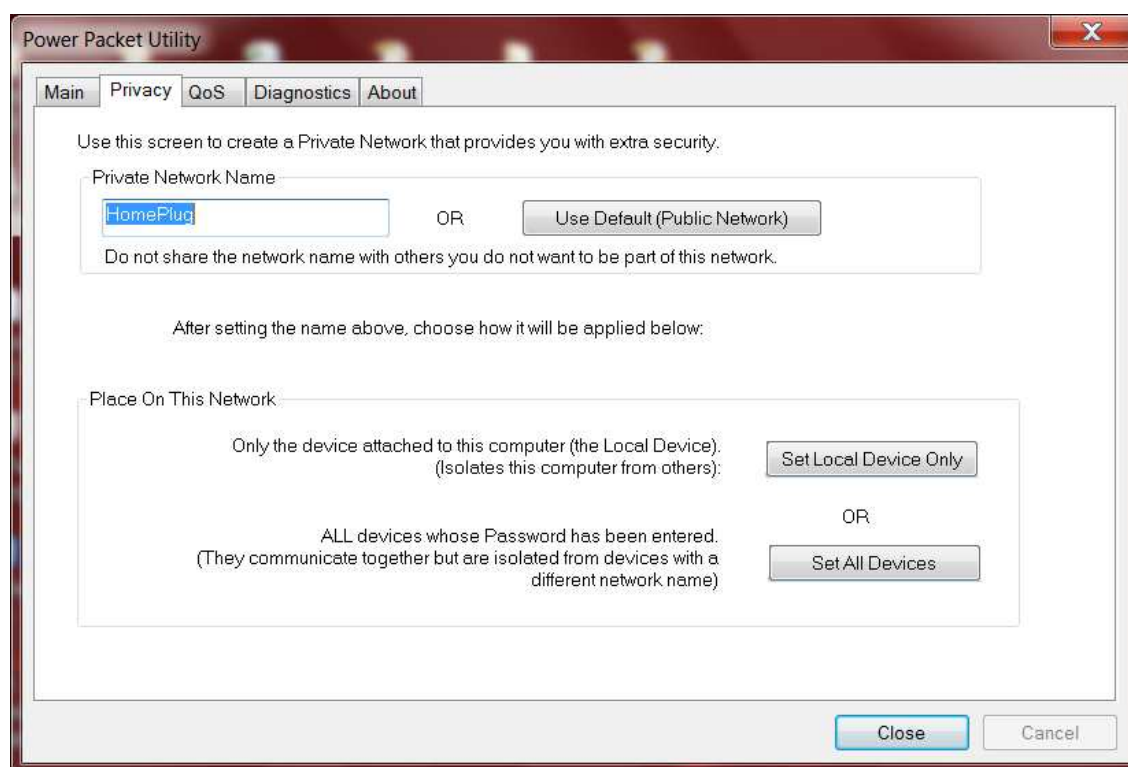
2. Enter the Device Name.
3. Enter the Password. The Device Password is printed on the sticker label on the HomePlug itself.
4. Click OK.

To scan for HomePlugs:

- Click Scan. By default, PowerPacket Utility scans devices from time to time.

Privacy

The Privacy tab provides a means for changing the Private Network Name of local or all HomePlug devices within the network. A Private Network Name is composed of four to 24 alphanumeric case-sensitive characters. *HomePlug* is the default Private Network Name.

**Privacy**

To change the Private Network Name of a local HomePlug:

Note...

You will not be able to change the Private Network Name of a local HomePlug if it is not in a connected status in the Main tab.

1. Enter the new Private Network Name in the Privacy tab. A Private Network Name is composed of four to 24 alphanumeric case-sensitive characters.
2. Click Set Local Device Only.

To change the Private Network Name of all HomePlugs in the network:

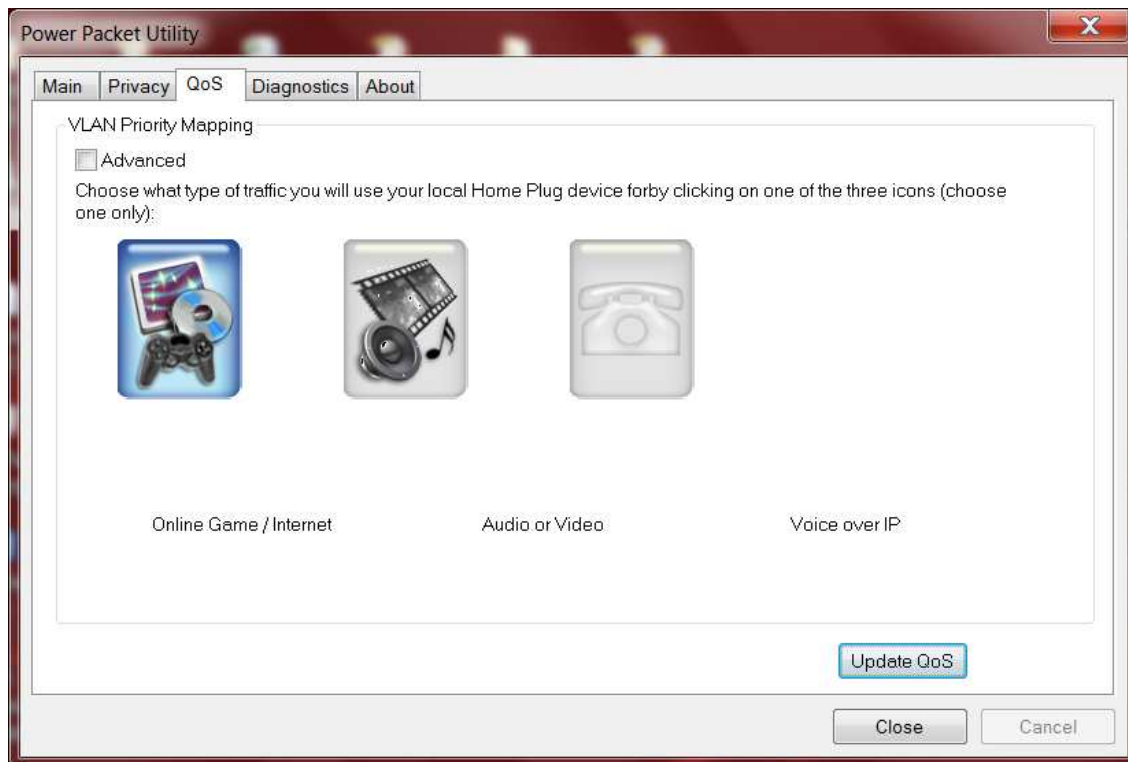
Note...

You will not be able to change the Private Network Name of local and remote HomePlug devices if the local HomePlug is not in a connected status and if the remote HomePlugs do not have their Device Passwords entered in the Main tab.

1. Enter the new Private Network Name in the Privacy tab. A Private Network Name is composed of four to 24 alphanumeric case-sensitive characters.
2. Click Set All Devices.

Quality of Service

Quality of Service (QoS) is a feature that allows you to determine which application will be given a guaranteed priority over other applications. QoS is not enabled by default.



QoS

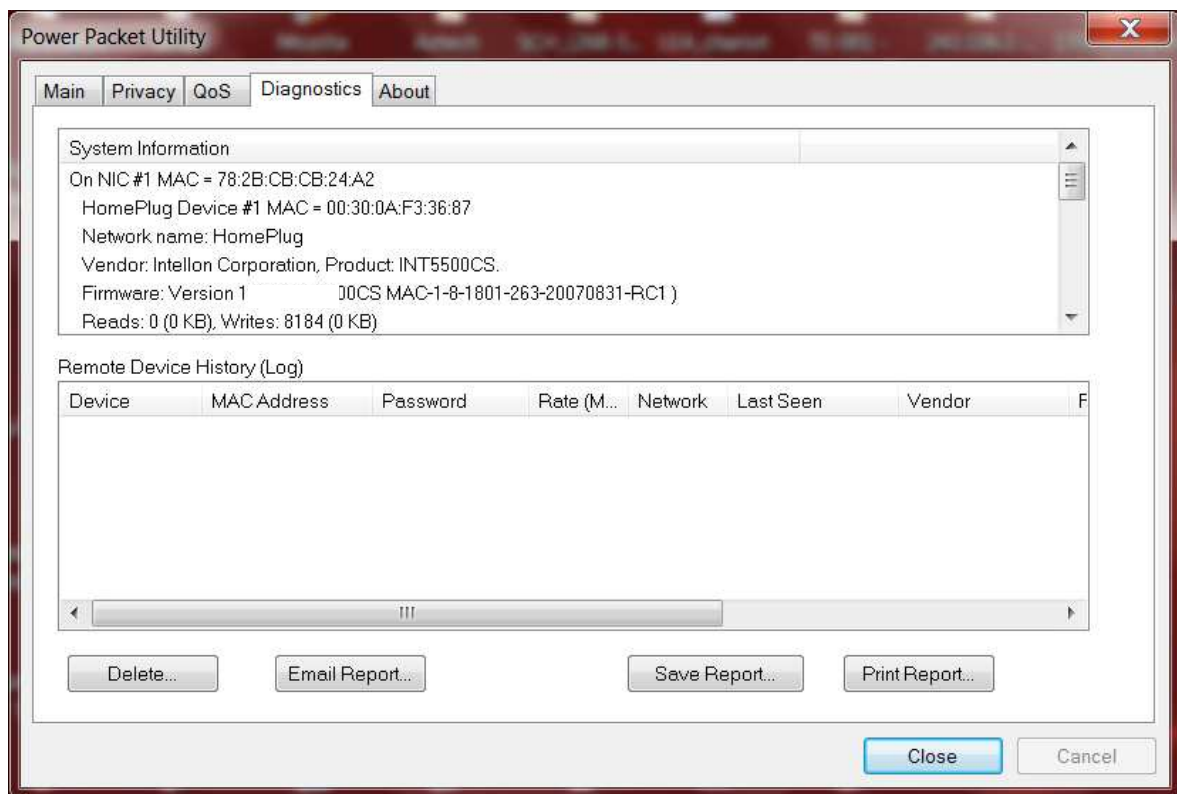
To enable QoS:

1. Select an application in the QoS tab
 - **Online Game/Internet** Select this option if the device will be connected to a computer or a game console
 - **Audio or Video** Select this option if the device will be used for audio/video streaming
 - **Voice over IP** Select this option for if the device will be used with your IP phone
2. Click **Update QoS**.

Diagnostics

Diagnostics displays details about the system as well as the other HomePlug devices within the network. It is divided into two sections – System Information and Remote Device History.

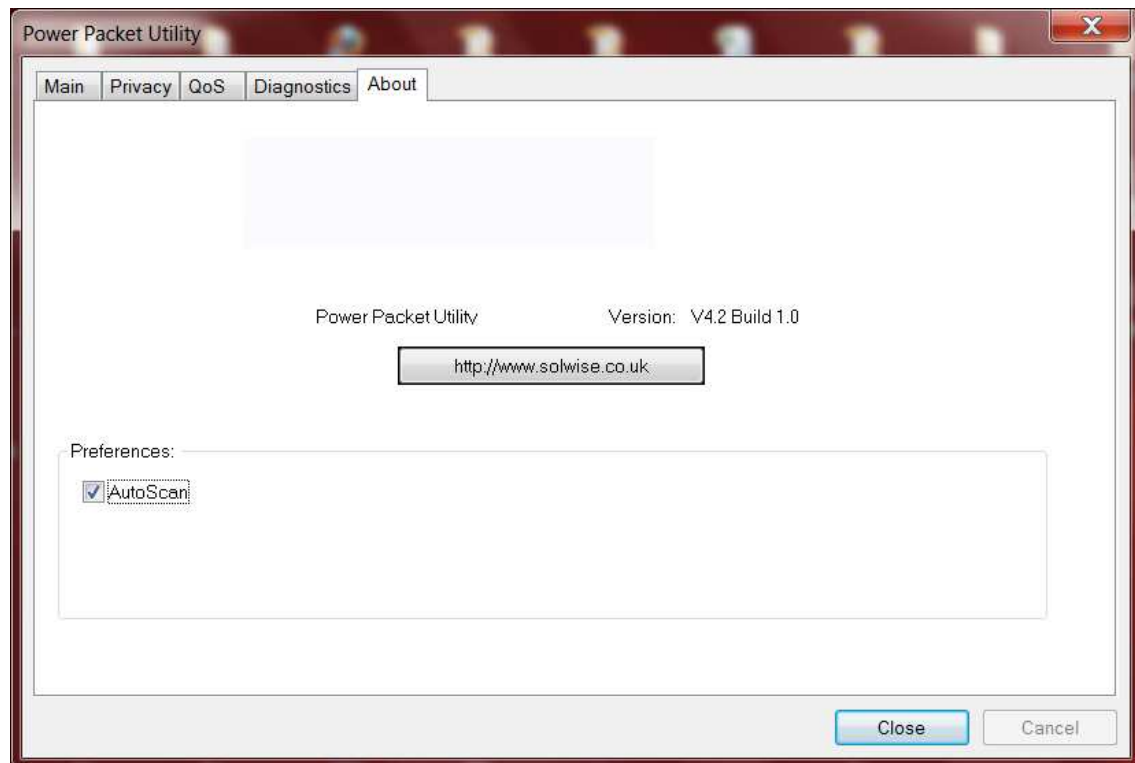
System Information displays software applications and hardware devices connected with the local computer. Remote Device History displays a record of all remote HomePlug devices that has been connected with the network.



Diagnostics

About

About displays the software version and preferences. The Autoscan preference is enabled by default.



About

Safety Instructions

For your safety, be sure to read and follow all warning notices and instructions.

- Do not open the device. Opening or removing the device cover can expose you to dangerous high voltage points or other risks. Only qualified service personnel can service the device. Please contact your vendor for further information.
- Do not use your device during a thunderstorm. There may be a risk of electric shock brought about by lightning.
- Do not expose your device to dust or corrosive liquids.
- Do not use this product near water sources.
- Make sure to connect the cables to the correct ports.
- Do not obstruct the ventilation slots on the device.