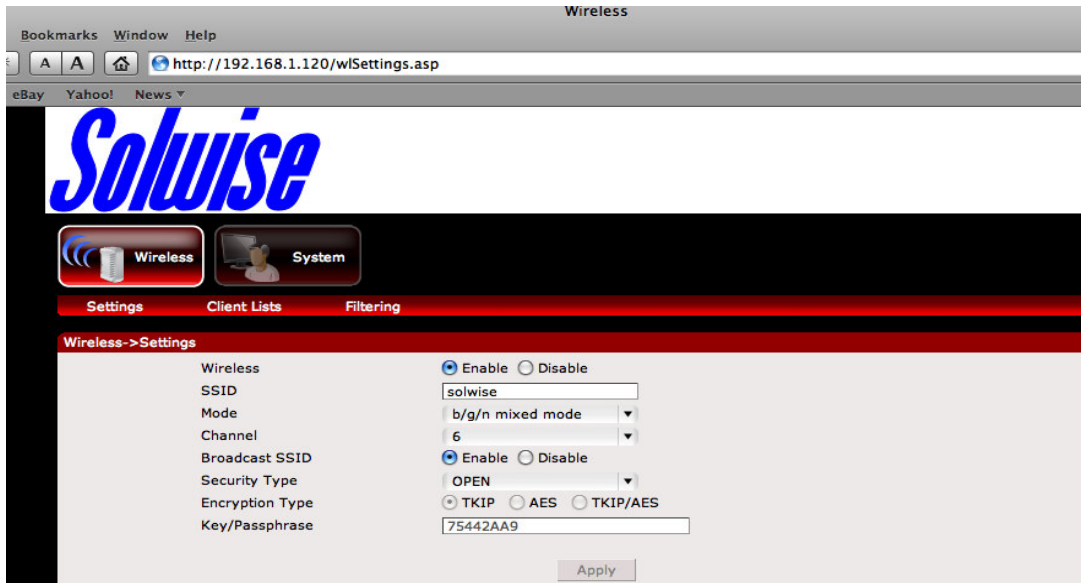


Configuring the NET-PL-200AV-PEW-N through the Web Browser

For users who do not have Windows as their operating system and can't install the utility, wifi security and other setting can be configured via a web browser. I recommend this is done with an ethernet cable connected to the plug, rather than wirelessly.

1. Enter the IP address 192.168.1.120 in the address bar of your browser and press enter, you should see the screen below. (If you don't get this then try turning off wifi, if still no joy then check the IP address of your computer, if it's not 192.168.1.x then you'll have to manually configure it to 192.168.1.2.



2. Here you can change the wifi name (SSID) to something of your choice and set wifi security, Click on the down arrow and select the security you require, I recommend WPA2 (example below), just click on apply when you've finished.

