



Network Camera

Quick Installation Guide



Table of Contents

Requirements	3
Physical Installation	3
Camera administration	4
Further Configuration	5

Thank you for purchasing PheeNet's Network Camera for IP surveillance applications. Before installation, please be sure to read this quick installation guide and user's manual carefully to complete machine installation.

Requirements

MJPEG Network Camera	
Network Environment	
LAN	10/100M Ethernet
Monitoring System Recommended	
System Hardware	<ul style="list-style-type: none">· CPU: Pentium III, 800 MHz or above· Memory Size : 128 MB (256 MB Recommended)· VGA card resolution : 1024 x 768 or above
System Requirement for Viewer & Recorder Application	
Support OS	Win 98 SE , Win 2000 , Win Me , Win XP
System Hardware	<ul style="list-style-type: none">1-4 cameras surveillance application<ul style="list-style-type: none">· CPU: Pentium III, 800 MHz or above· Memory Size : 128 MB (256 MB Recommended)· VGA card resolution : 1024 x 768 or above4 or more cameras surveillance application<ul style="list-style-type: none">· CPU: Pentium 4, 1.7G MHz or above· Memory Size : 512 MB or above· VGA card resolution : 1024 x 768 or above

Physical Installation

1. Connect an Ethernet cable

Connect one end of an Ethernet cable to the LAN port located on the Network Camera's rear panel and attach the other end to the net-work device (hub or switch).

2. Attach the power supply

Connect the provided power adapter to the Network Camera connector labeled "12VDC" on rear panel and then plug into AC power socket. The AL9643 IR IP Camera is already built-in switching power inside. Therefore, just plug the AC power cord to the into AC power socket.

3. Check the LEDs (Rear Panel)

The STATUS would be **ON**, and the 10/100 LED would flash for few times to detect network connection. The network indication LEDs would be on depending on which network type is available.

Camera administration

The Network Camera provides GUI (Web based, Graphical User Interface) for machine management and maintenance.

When you installed your IP camera over your network environment, to start Network Camera web configuration, you must have the web browsers installed on computer for web management.

- Microsoft internet Explorer 5.0 or higher with Java support

Default LAN interface IP address of Network Camera is **192.168.0.20**. You may now open your web browser, and key in <http://192.168.0.20> in the address bar of you web browser to logon Network Camera's web configuration page.

The Network Camera will prompt for User Name and Password. For the first time, please enter : **admin** as username to continue machine Web Management.



If difficulty is met, please refer to the following steps to establish the connection:

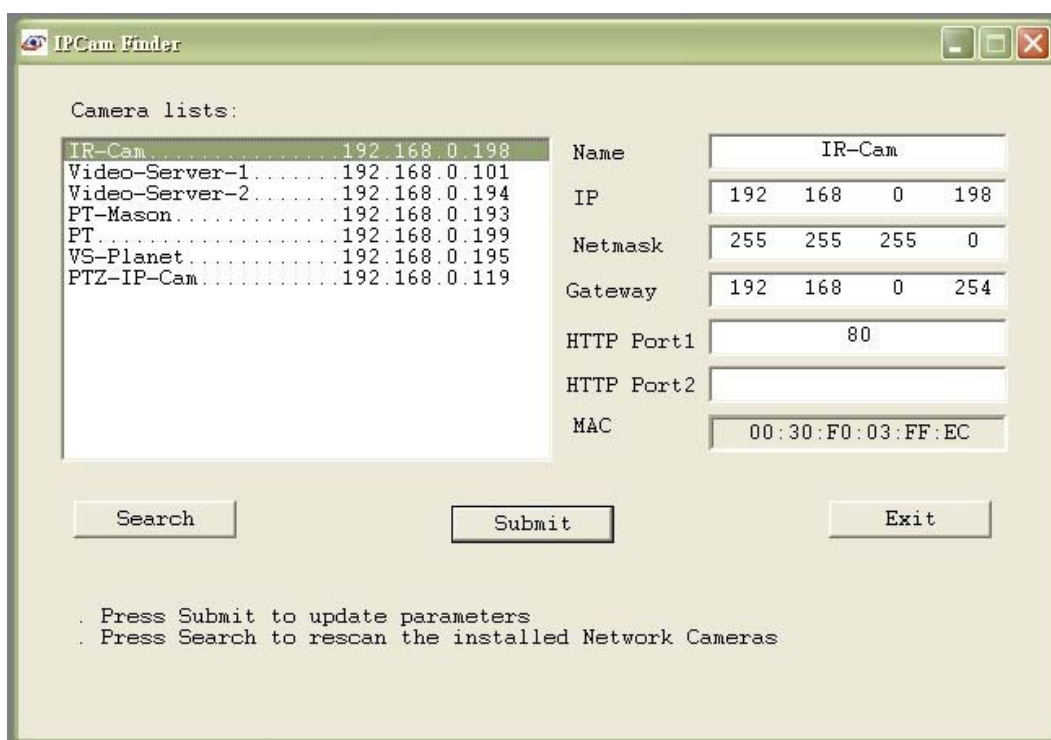
- Your PC can establish a physical connection to the Network Camera. The PC and the Network Camera must be directly connected (using the LAN port on the Network Camera.) or on the same LAN segment. That is the PC must be configured to an IP address and subnet mask in 192.168.0 x segment. For example: IP: 192.168.0.2, subnet mask : 255.255.255.0.
- The Network Camera must be installed and powered NO.

- If the PT Internet Camera's default IP Address (**192.168.0.20**) is already used by another device, the other device must be turned OFF until the Network Camera is allocated a new IP Address during configuration.

Or you may execute IP Finder to discover PT Camera's IP address. Before starting installation, Please ensure that:

Procedures of IP finder utility

- Please find the IP Finder in the Utility folder on user s manual CD
- Double-click the IP Finder and the following screen should be prompt on your computer.
- Choose the destination camera for IP address and device name modifications.



- After modifications, you may now connect the camera via web browser.