

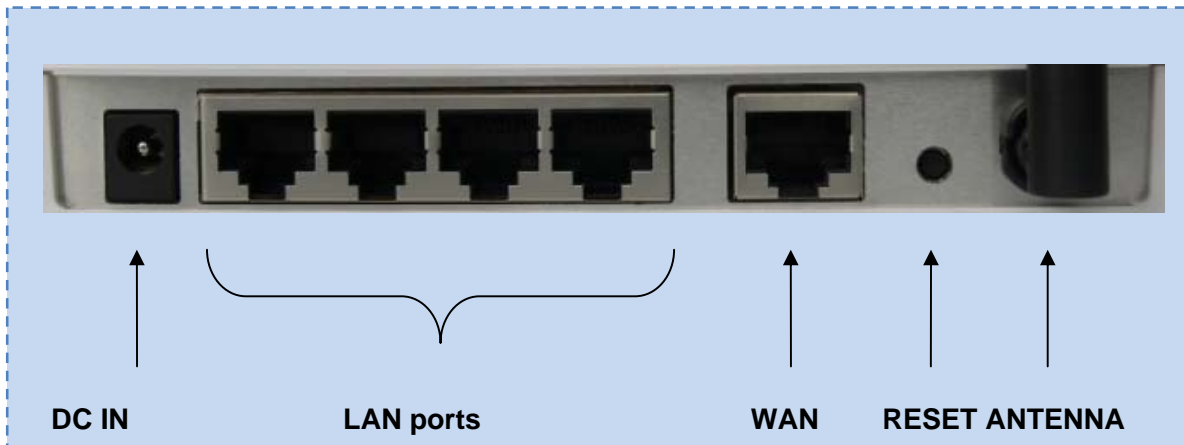
# ECB-1220R

## Wireless Client Bridge/AP/Router/Bridge Router

### Quick Installation Guide

#### **Pre-requisites:-**

1. Internet connection should be setup & ready to use (ADSL or cable modem).
2. Modem must provide RJ45 port to connect with ECB-1220R.
3. CAT 5 network cable(s), RJ45 port on PC/Notebook.
4. Microsoft Windows compatible PC/Notebook with UPnP enabled network adapter.



#### **STEP 1**

Connect **ECB-1220R INTERNET** port & your **modem WAN** with network cable.

#### **STEP 2**

Power up **ECB-1220R**.POWER led on front panel lights up & remains stable.

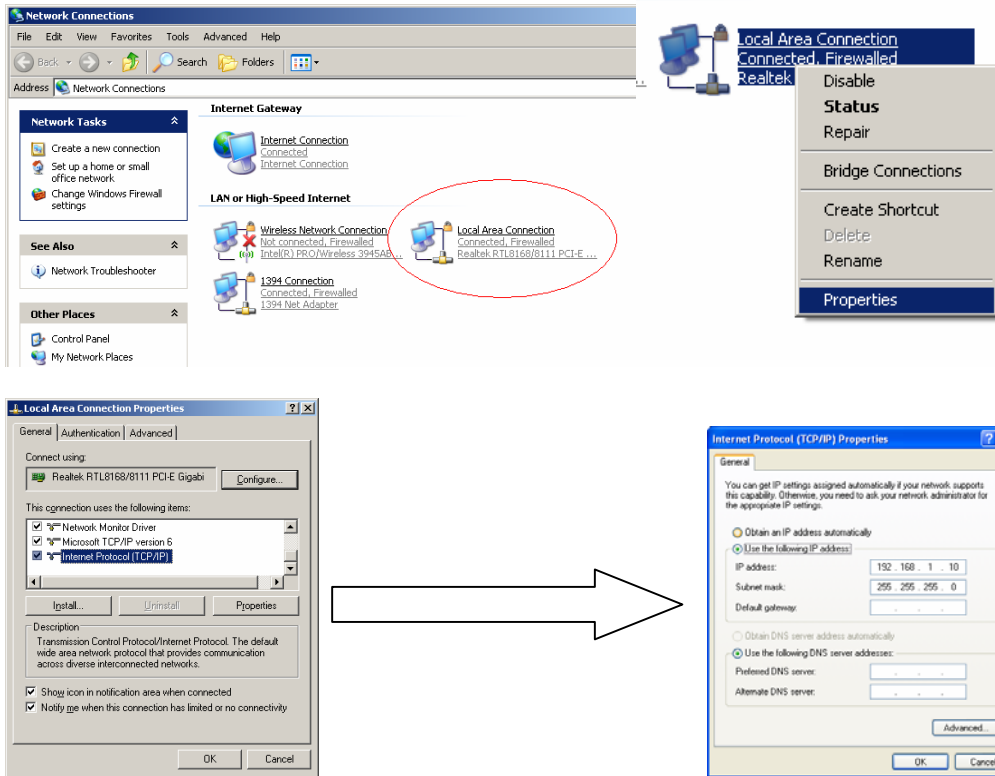
#### **STEP 3**

Connect **ECB-1220R RJ45** port & **PC/Notebook RJ45** port with network cable.

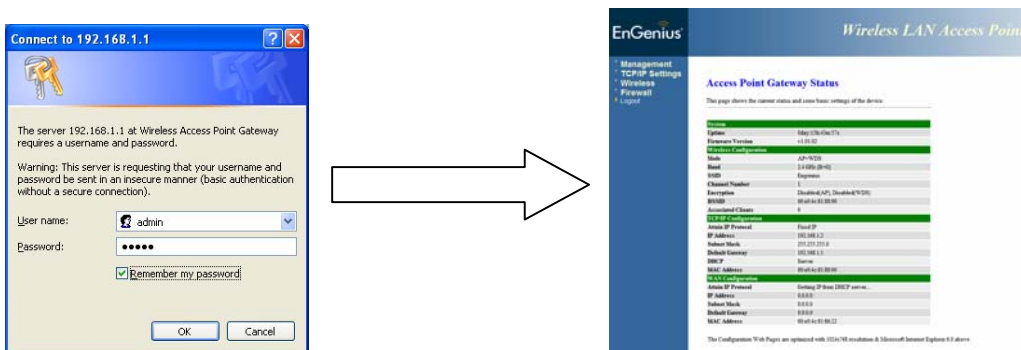
#### **STEP 4**

Connect **ECB-1220R RJ45** port & **PC/Notebook RJ45** port with network cable.

You will see the network connection enabled at your computer. Edit network adapter properties and configure to **[Static IP address]**



1. OPEN your browser (e.g. Internet Explorer)
2. Type <http://192.168.1.1> or <http://192.168.1.2> in address bar and hit [Enter] button on your keyboard.
3. Give username/password details as admin/admin.



4. Click **OK** to navigate into ECB-1220R configuration home page.
5. Enable Wireless AP settings & apply settings.
6. Click **Management** to set the mode of the ECB-1220R.