

Getting Started

What This Package Contains?

Upon receiving your wireless access point, please check to make sure the following contents are packaged:

- Powerline to Wireless Access Point
- Wireless Compact Flash Card
- User's manual

Necessary Equipment?

- One or more computers using either an Ethernet or USB Wall Module
- Microsoft TCP/IP networking protocol installed on each PC
- A wireless PCMCIA card with it's software already installed
- Web browser installed on each PC

Equipment that can be used with the POWERLINE TO WIRELESS ACCESS POINT?

- Broadband modem
- Broadband router
- Additional PCs with a wireless PCMCIA card

Important: After receiving the wireless access point, please check for any shipping damages to the carton before proceeding with any installations.

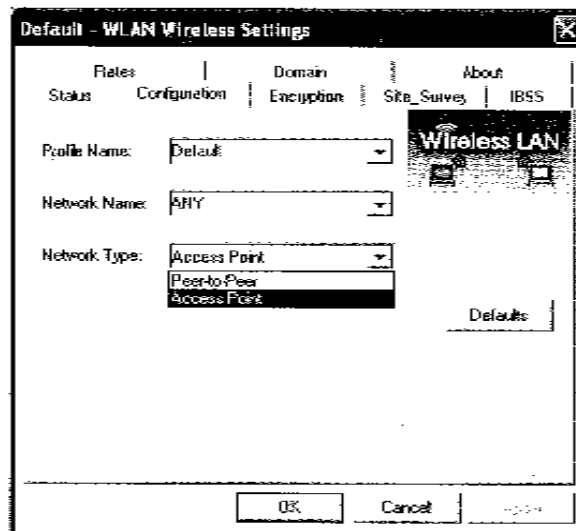
PC or Laptop Setup Guide

Note: If you have not installed your PCMCIA wireless card to your laptop as of yet, please do so. For instructions on how to install your PCMCIA wireless card, please contact the manufacturer of that wireless card.

To configure the PCMCIA wireless card to work with your POWERLINE TO WIRELESS ACCESS POINT, please follow the following steps:

1. Insert the compact flash card into the POWERLINE TO WIRELESS ACCESS POINT and then plug it into an outlet.
2. Go to the wireless card's configuration screen or window. It should resemble figure 1 listed below.
3. In the Network Name (SSID) field, type in the following: POWERLINE TO WIRELESS ACCESS POINT (This is case sensitive)
4. In the Network Type field, make sure Access Point is selected.
5. Click OK to exit the configuration window.

Note: If you are using Win XP you will not need to configure the PCMCIA card as to XP has an auto sense function included in the operating system.



POWERLINE TO WIRELESS ACCESS POINT Setup Guide

You will need to temporarily change the IP address of your PC/laptop so you can access and setup your POWERLINE TO WIRELESS ACCESS POINT. Follow these steps depending on your operating system.

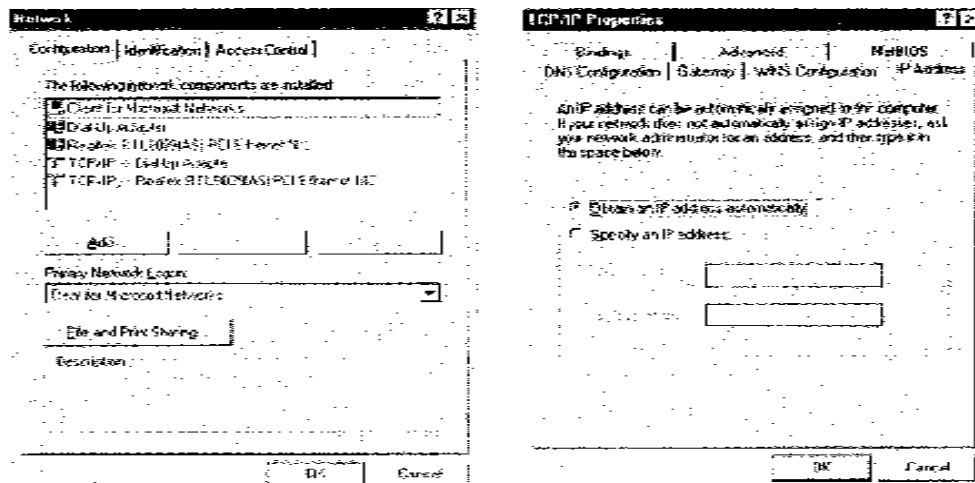
Note: If you have not changed the default powerline password (HomePlug) or default IP address (192.168.8.1) on your network then there is no need to continue this setup.

Windows 98 SE / ME

1. Click on Start, then Settings, and then Control Panel.
2. Double click on the Network icon.
3. Select the TCP/IP Protocol entry.
4. Click on the Properties button.
5. Select the IP Address tab.
6. Select Specify an IP address.
7. Type in the following address: 192.168.8.10.

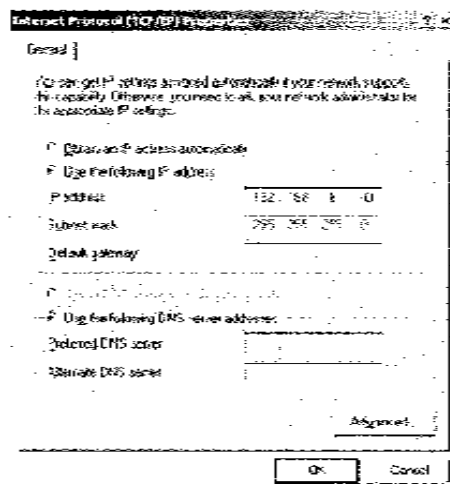
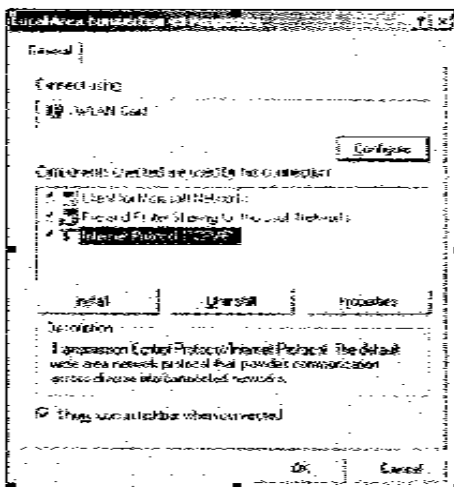
8. For the Subnet Mask, type: 255.255.255.0.
9. Click OK to close the TCP/IP properties panel.

10. Click OK to close the Network panel.
11. You will need to restart the PC in order for the changes to take effect.



Windows 2000 / XP

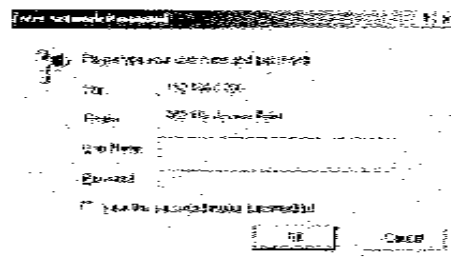
1. Open Network Connections.
 - Win 2000: Click on Start, Settings, then Network, and Dial-up Connections.
 - Win XP: Click on Start, Connect To, then Show All Connections.
2. Right click on Local Area Connection and then select Properties.
3. Select Internet Protocol (TCP/IP) and then click on Properties.
4. Click on Use the following IP address.
5. Type in the following IP address: 192.168.8.10.
6. For the Subnet Mask, type: 255.255.255.0.
7. Click OK to close the TCP/IP properties panel.
8. Click OK to close the Network panel and the changes will take effect when this panel is closed.



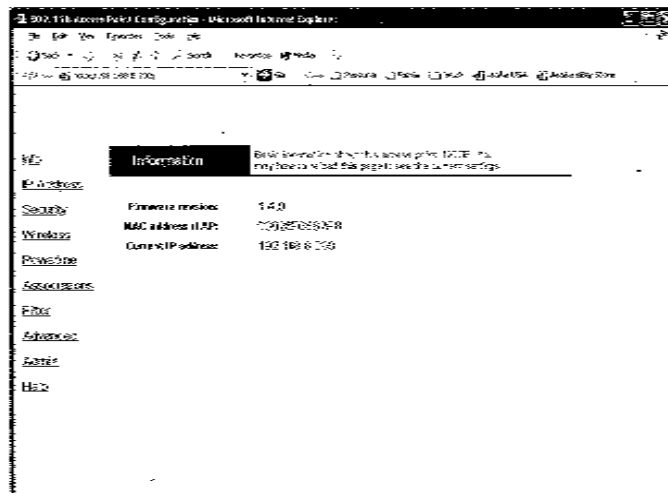
Log onto the POWERLINE TO WIRELESS ACCESS POINT and change the powerline password as well as the IP address according to your existing network.

Accessing the POWERLINE TO WIRELESS ACCESS POINT

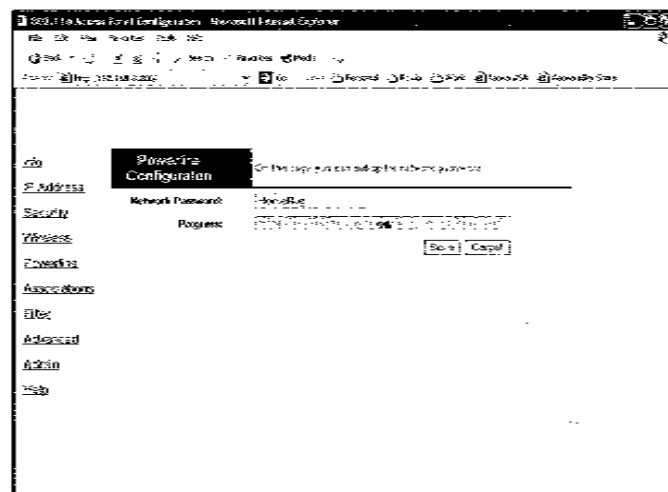
1. Open a web browser and type in the following address: 192.168.8.200.
2. A login screen should appear. Skip the login name and type in the following for the password: admin.



3. The information screen should now appear in the browser window. Here is where the Firmware revision, MAC address of the WAP, and current IP address are displayed.



4. Click on the Powerline Tab.



5. The default powerline password is HomePlug. If your existing powerline password is different, change this password accordingly.
6. Click on the Save button.
7. Click on the Reboot button when it appears. A small window will then appear asking you to confirm your changes, click Yes.

Setting up the IP address on the POWERLINE TO WIRELESS ACCESS POINT

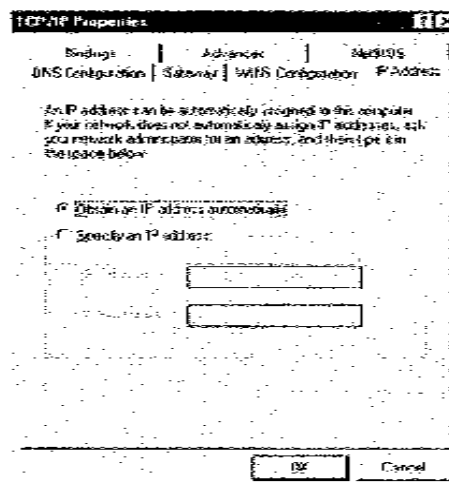
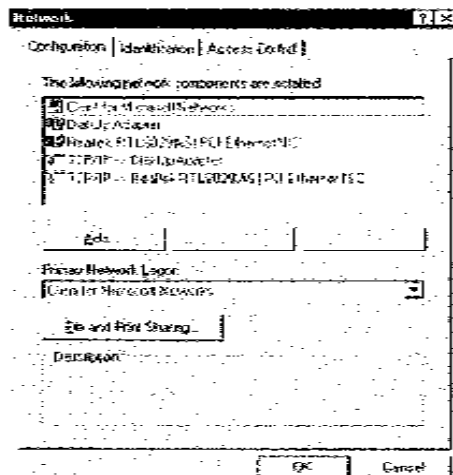
1. Click on the IP Addr Tab.
2. The POWERLINE TO WIRELESS ACCESS POINT IP address is listed under Default IP address. To change this, simply type in an IP address that matches your network configuration (Example: 10.1.1.10)
3. You can leave the Default Subnet mask and Default Gateway values the same.
4. Click on Save.
5. In the next screen, click on the Reboot button. A small window will then appear asking you to confirm your changes, click Yes.
6. After the browser stops working, close it.

At this point, you will need to change the PC's IP address back to its original settings. Follow these steps depending on your operating system.

Windows 98 SE / ME

1. Click on Start, then Settings, and then Control Panel.
2. Double click on the Network icon.
3. Select the TCP/IP Protocol entry.
4. Click on the Properties button.
5. Select the IP Address tab
6. Select Obtain an IP Address Automatically.
7. Click OK to close the TCP/IP properties panel.
8. Click OK to close the Network panel.

You will need to restart the PC in order for the changes to take effect.



Windows 2000 / XP

1. Open Network Connections.
 - Win 2000: Click on Start, Settings, then Network and Dial-up Connections.
 - Win XP: Click on Start, Connect To, then Show All Connections.
2. Right click on Local Area Connection and then select Properties.
3. Select Internet Protocol (TCP/IP) and then click on Properties.
4. Select Obtain an IP Address Automatically and Obtain a DNS server automatically.
5. Click OK to close the TCP/IP properties panel.
6. Click OK to close the Network panel.

The changes will take effect when this panel is closed.

Open a new web browser and type in the new POWERLINE TO WIRELESS ACCESS POINT IP address to ensure the changes have taken affect.

Other Features

Associations Tab

- This screen lists all stations that are associated with this unit. The amount of time since packets were transferred to or from each station. If a station is idle for too long, it is removed from this list.

Wireless Tab

- Here you can change the name of the access point
- Change the value for the SSID (Note: If you change the value here, you will also need to change the value on each PC.)
- Change the Basic Mb rates
- Change the Supported Mb rates
- Change the Transmission Mb rates

Filtering Tab

- Here you can either limit or block AP units associating with this unit: by MAC address

Advanced Tab

- Here you can adjust the following:
- Maximum associated stations
- Fragmentation threshold
- RTS threshold
- Beacon period
- DTIM interval

- Multicast PM buffering

Security Tab

- Here is where you can adjust security and encryption settings. The following can be set:

- AP visibility
- Enable WEP
- Set WEP key lengths
- Set WEP Keys 1 - 4
- Set the WEP key to use
- Deny unencrypted data
- Set authentication (Open, Shared Key, Both)

IP Addr Tab

- Here you can setup the following server configurations:

- Static or DHCP mode
- Default IP address
- Default subnet mask
- Default gateway
- Allow upgrade uploads

Admin Tab

- Here you can change the Administrator user name and password

Help Tab

- There is where some helpful information will be