



# **BIPAC-6500 / 6500W**

**(Wireless) Broadband VPN Firewall Router**

**with 4-port 10/100M Switch**

**Quick Start Guide**





**For more detailed instructions on configuring and using the (Wireless) Broadband Router, please refer to the on-line manual.**

## Package Contents

- Billion BIPAC-6500 / 6500W (Wireless) Broadband VPN Firewall Router
- CD-ROM containing the online manual
- Ethernet (CAT-5 LAN) Cable
- AC-DC power adapter (12VDC, 1A)
- This Quick Start Guide
- One 802.11b (11Mbps) wireless PCMCIA or USB adaptor (**optional for 6500W**)
- One quick start guide for the above wireless adaptor (**optional for 6500W**)
- One CD containing the driver or utility for the above wireless adaptor (**optional for 6500W**)



### **Warning**

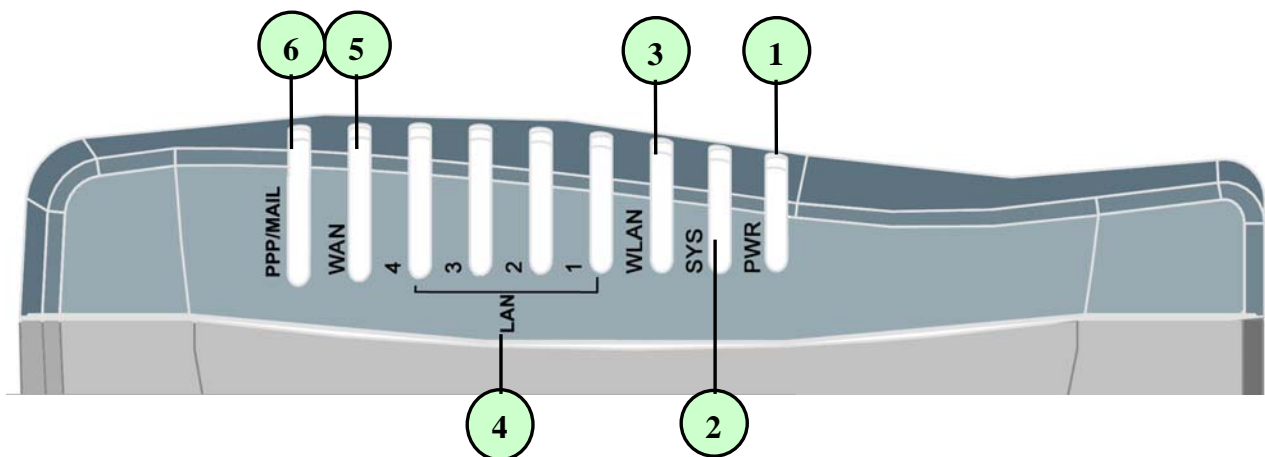
- ✓ Do not use the BIPAC-6500 / 6500W in high humidity or high temperatures.
- ✓ Do not use the same power source for the BIPAC-6500 / 6500W as other equipment.
- ✓ Do not open or repair the case yourself. If the BIPAC-6500 / 6500W is too hot, turn off the power immediately and have it repaired at a qualified service center.



### **Attention**

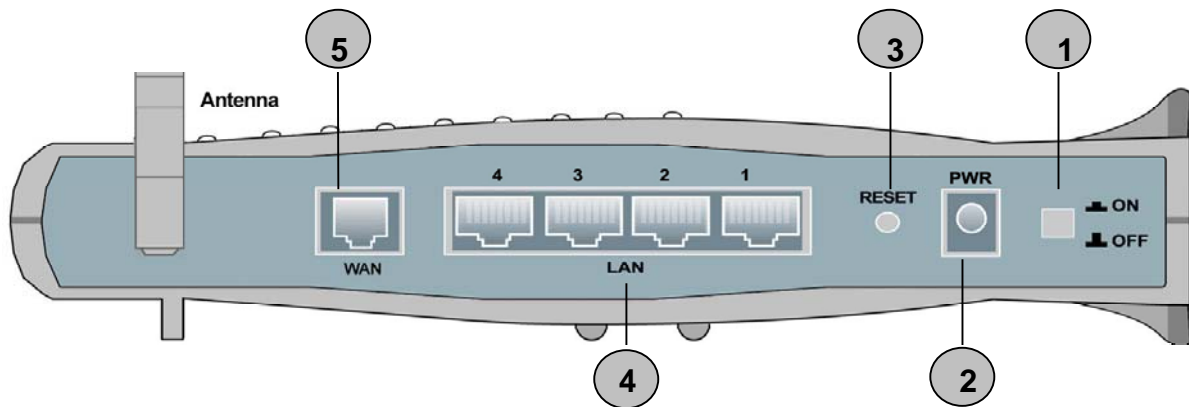
- ✓ Place the BIPAC-6500 / 6500W on a stable surface.
- ✓ Only use the power adapter that comes with the package. Using a different voltage rating power adaptor may damage the router.

## The Front LEDs



LED		Meaning
1	<b>PWR</b>	Lit green when power ON
2	<b>SYS</b>	Lit when system is ready
3	<b>WLAN (for 6500W only)</b>	Lit green when wireless connection is established. Flashes when sending/receiving data.
4	<b>LAN1</b>	Lit green when connected at 100 Mbps. Lit orange when connected at 10 Mbps. Flashes when sending/receiving data.
	<b>LAN2</b>	
	<b>LAN3</b>	
	<b>LAN4</b>	
5	<b>WAN</b>	Lit green when connected at 100 Mbps. Lit orange when connected at 10 Mbps. Flashes when sending/receiving data.
6	<b>PPP / MAIL</b>	Lit green when PPPoE or PPTP connection is established. Lit orange when there is email in the email account Flashes orange when upgrading firmware.

## The Rear Ports



**NOTE:**

\* Only the BIPAC-6500W has a wireless interface and antenna. BIPAC-6500 router does NOT have an antenna or wireless interface.

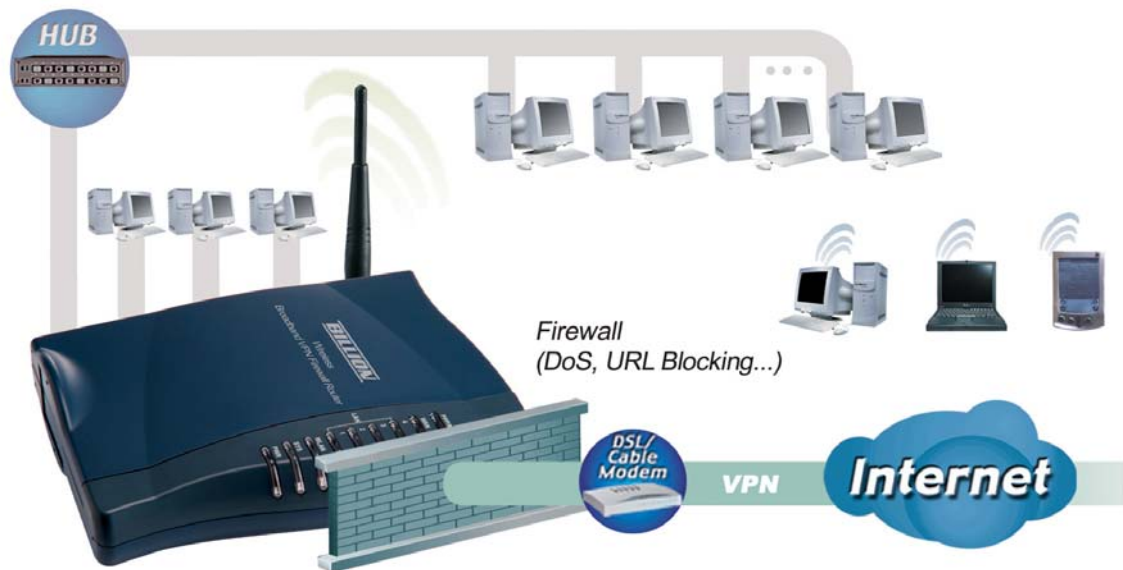
Port		Meaning
1	Power Switch	Power ON/OFF switch
2	PWR	Connect the supplied power adapter to this jack.
3	RESET	After the device is powered on, press it to reset the device or restore to factory default settings. <b>0-3 seconds:</b> reset the device <b>3-6 seconds:</b> no action <b>6 seconds above:</b> restore to factory default settings (this is used when you can not login to the router, e.g. forgot the password)
4	LAN (RJ-45 connector)	Connect a UTP Ethernet cable (Cat-5 or Cat-5e) to one of the four LAN ports when connecting to a PC or an office/home network of 10Mbps or 100Mbps.
5	WAN (RJ-45 connector)	Connect an UTP Ethernet cable to this port when connecting to a hub. Connect a crossover cable to this port when connecting to a DSL/Cable bridge or modem for establishing WAN connections.

## Connecting Your Broadband Router

- 6500



- 6500W



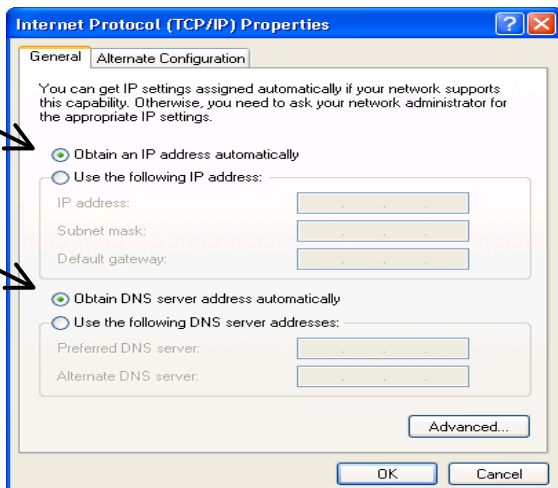
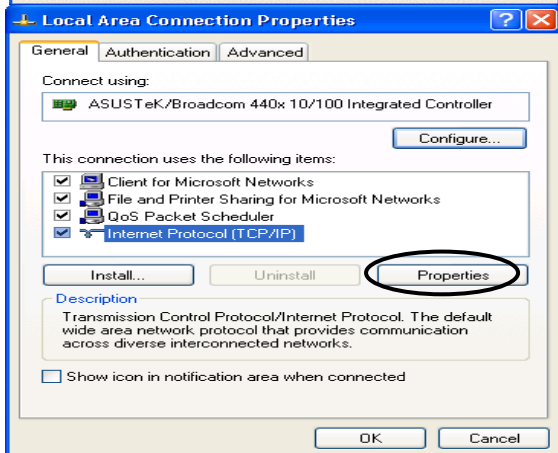
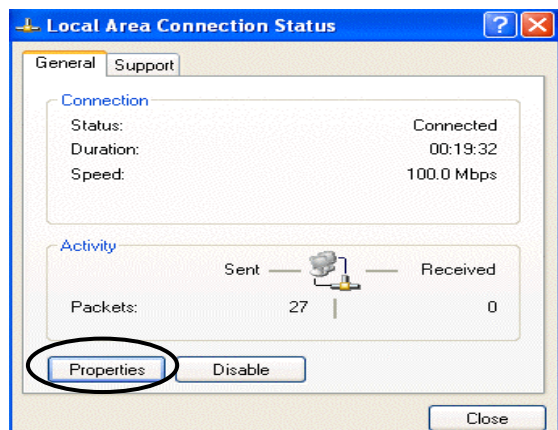
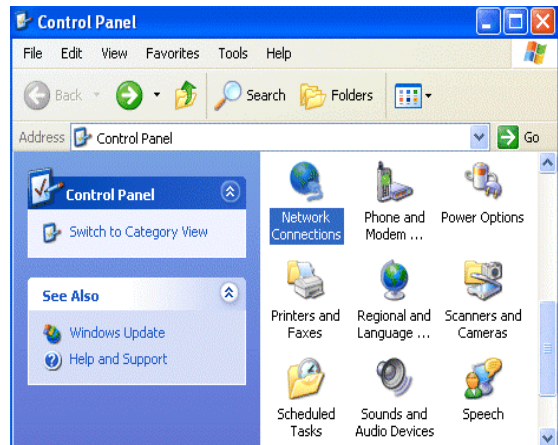
1. Connect the Router to a **LAN** (Local Area Network) and the ADSL/telephone (**WAN**) network.
2. Power on the device.
3. Make sure the **PWR** and **SYS** LEDs are lit steadily and that the **relevant LAN** LED is lit. (For 6500W only: the **WLAN** LED will be lit steadily).

**NOTE:**

\* Be noted, the router provides a 10/100Mbps Ethernet port (10Base-T) in the WAN site, it will not detect MDI and MDIX automatically. Therefore, an Ethernet cross-over cable should be used to connect to DSL/CABLE modem.

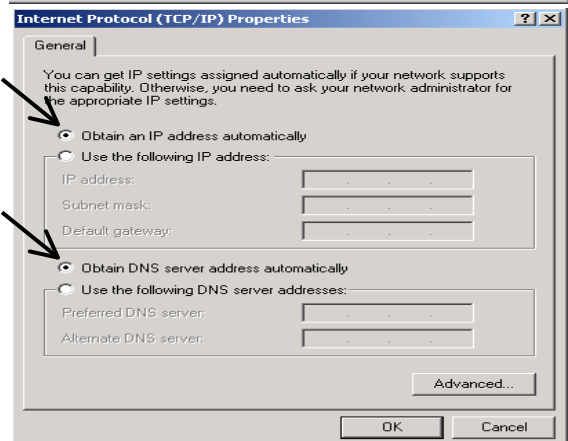
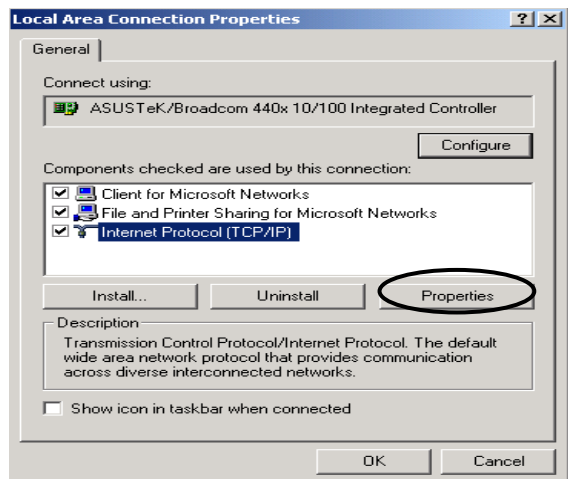
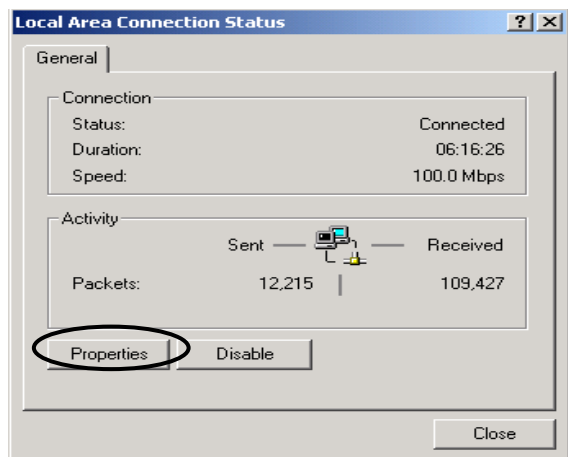
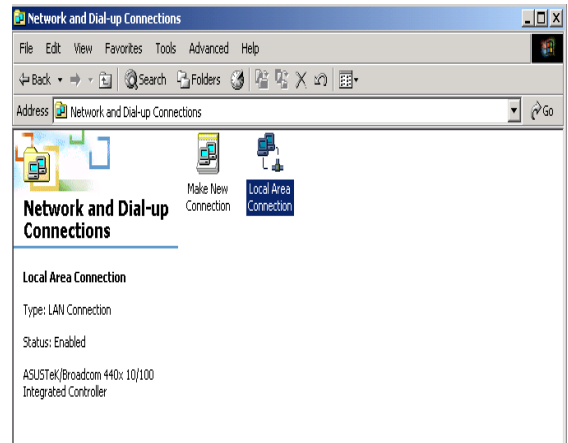
## Configuring PC in Windows XP

1. Go to **Start / Control Panel (in Classic View)**. In the Control Panel, double-click on **Network Connections**
2. Double-click **Local Area Connection**.
3. In the **Local Area Connection Status** window, click **Properties**.
4. Select **Internet Protocol (TCP/IP)** and click **Properties**.
5. Select the **Obtain an IP address automatically** and the **Obtain DNS server address automatically** radio buttons.
6. Click **OK** to finish the configuration.



## Configuring PC in Windows 2000

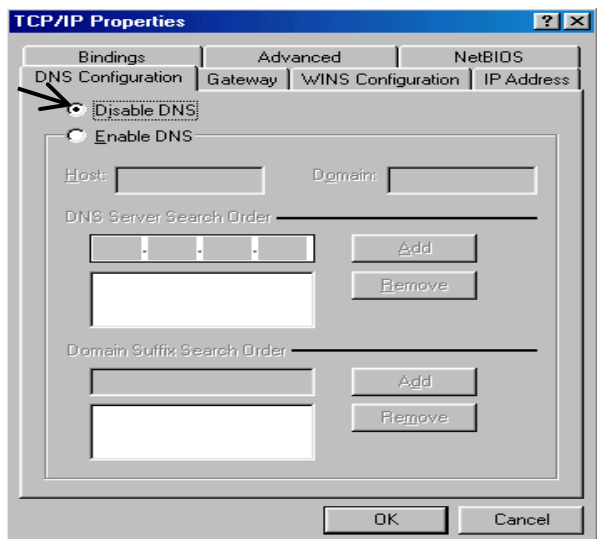
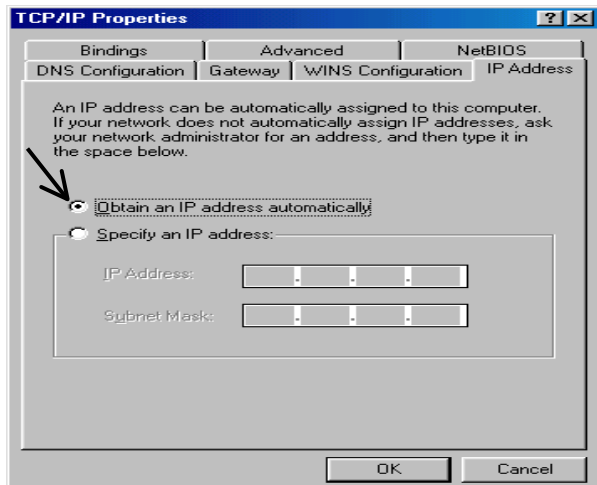
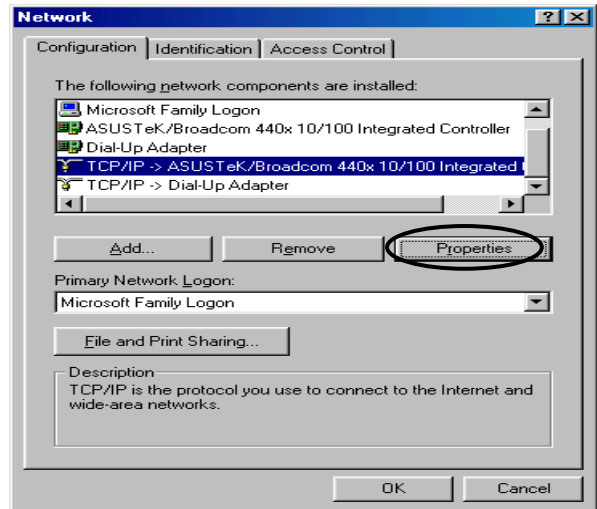
1. Go to **Start / Settings / Control Panel**. In the Control Panel, double-click on **Network and Dial-up Connections**.
2. Double-click **Local Area Connection**.
3. In the **Local Area Connection Status** window click **Properties**.
4. Select **Internet Protocol (TCP/IP)** and click **Properties**.
5. Select the **Obtain an IP address automatically** and the **Obtain DNS server address automatically** radio buttons.
6. Click **OK** to finish the configuration.





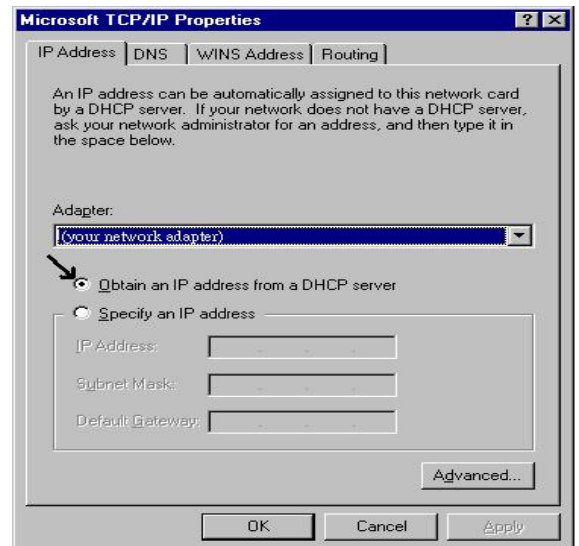
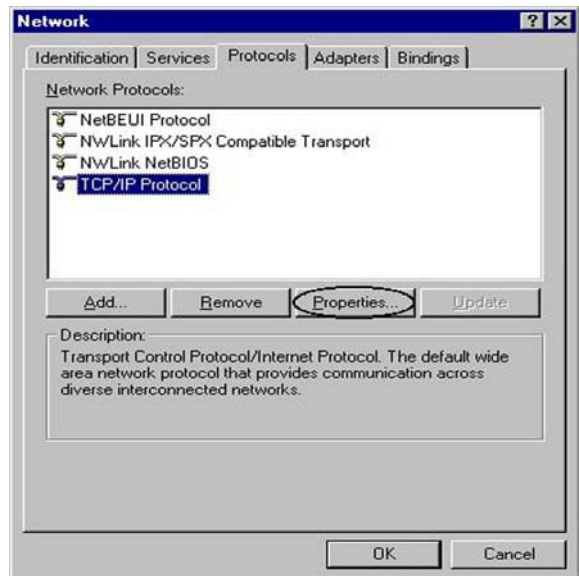
## Configuring PC in Windows 98/Me

1. Go to **Start / Settings / Control Panel**. In the Control Panel, double-click on **Network** and choose the **Configuration** tab.
2. Select **TCP/IP -> NE2000 Compatible**, or the name of your Network Interface Card (NIC) in your PC.
3. Select the **Obtain an IP address automatically** radio button.
4. Then select the **DNS Configuration** tab.
5. Select the **Disable DNS** radio button and click **OK** to finish the configuration.



## Configuring PC in Windows NT4.0

1. Go to **Start / Settings / Control Panel**. In the Control Panel, double-click on **Network** and choose the **Protocols** tab.
2. Select **TCP/IP Protocol** and click **Properties**.
3. Select the **Obtain an IP address from a DHCP server** radio button and click **OK**.



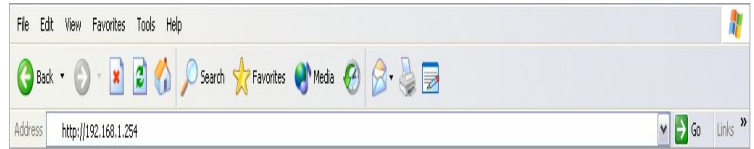
## Configuring Your Broadband VPN Firewall Router



*To configure this device, you must have IE 5.0 / Netscape 4.5 or above installed*

### ■ Verifying Your Local Network Connection with the Device

Open the web browser, enter the local port IP address of this router, which default at **192.168.1.254**, and click “Go” to get the login page.

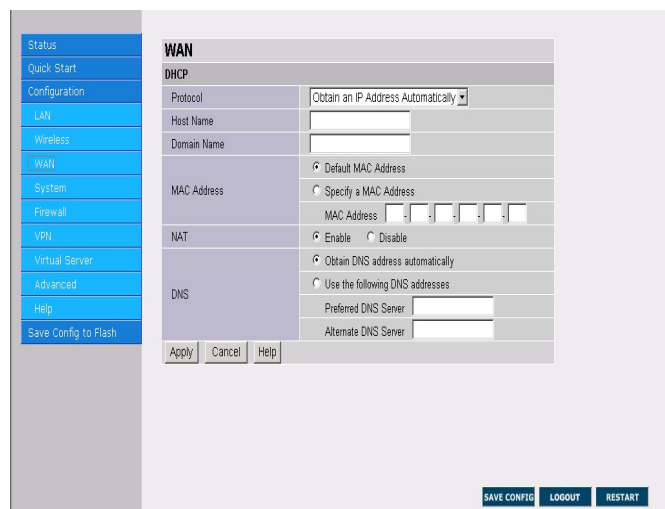


No user name is required. The default password is left blank. If you have set a password, enter that and click “OK” to continue.



Click **WAN** in left pane and select one of the protocols for connecting with remote site such as ISP from the following:

#### I. Obtain an IP Address Automatically



## II. PPPoE

**WAN**

**PPPoE**

Protocol: PPPoE

PPP Authentication Type: Auto

User Name: \_\_\_\_\_

Password: \_\_\_\_\_

Service Name: \_\_\_\_\_ (option)

Specify an IP address: \_\_\_\_\_ (option)

NAT:  Enable  Disable

Dial on demand:  Always on  
 Auto-disconnect if idle for more than 5 minutes  
 Obtain DNS address automatically

DNS:  Obtain DNS address automatically  
 Use the following DNS addresses

Preferred DNS Server: \_\_\_\_\_

Alternate DNS Server: \_\_\_\_\_

Apply Cancel Help

SAVE CONFIG LOGOUT RESTART

## III. Fixed IP

**WAN**

**Fix IP**

Protocol: Fixed IP

IP Address: \_\_\_\_\_

Subnet Mask: \_\_\_\_\_

Gateway Address: \_\_\_\_\_

NAT:  Enable  Disable

Preferred DNS Server: \_\_\_\_\_

Alternate DNS Server: \_\_\_\_\_

Apply Cancel Help

SAVE CONFIG LOGOUT RESTART

## IV. PPTP Client

Click **Apply** button and then click the **Save Config** button to save all of the configuration parameters to Flash. The router will reboot automatically.

**WAN**

**PPTP**

Protocol: PPTP Client

PPP Authentication Type: Auto

User Name: \_\_\_\_\_

Password: \_\_\_\_\_

Specify an IP address: \_\_\_\_\_ (option)

PPTP Server: \_\_\_\_\_

Own IP Address:  Obtain IP address automatically  
 Static IP IP Address: \_\_\_\_\_

NAT:  Enable  Disable

Dial on demand:  Always on  
 Auto-disconnect if idle for more than 5 minutes  
 Obtain DNS address automatically

DNS:  Obtain DNS address automatically  
 Use the following DNS addresses

Preferred DNS Server: \_\_\_\_\_

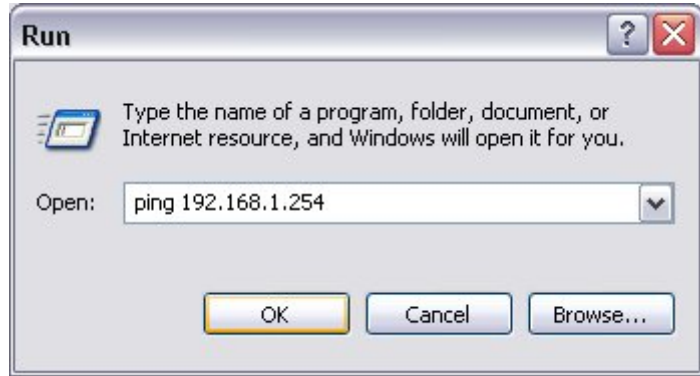
Alternate DNS Server: \_\_\_\_\_

Apply Cancel Help

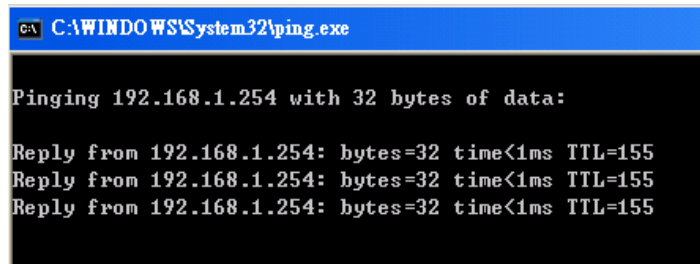
SAVE CONFIG LOGOUT RESTART

## ■ Connecting to the Router

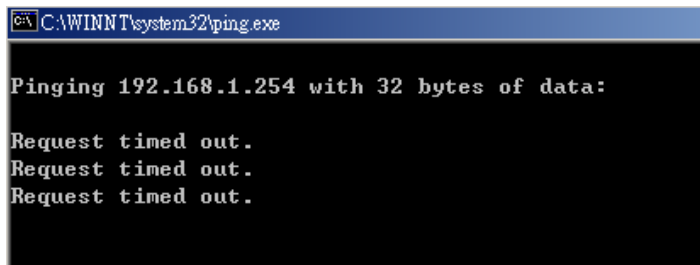
To see if this router is visible on the local network, go to **Start / Run**. In the Run dialog box, type “**Ping 192.168.1.254**” and press **OK**.



A command prompt window will pop out. If your ping is successful which means your local network is able to reach to the device, then the command prompt window will close up automatically.



Connection fails, when you see “**Request timed out**” in the command prompt window. You may need to check your set up.



**Now open your web browser to begin surfing the Internet!**

## Product Support and Contact Information

Most problems can be solved by referring to the **Troubleshooting** section in the User's Manual. If you cannot resolve the problem with the **Troubleshooting** chapter, please contact the dealer where you purchased this product.

### Contact Billion

#### AUSTRALIA

<http://www.billion.com.au/>

Hotline: 1300 139 159, 7 days a week.

©2004 Billion Electric Co., Ltd. PC Range P/L. All Rights Reserved.

#### WORLDWIDE

<http://www.billion.com/>

Mac OS is a registered Trademark of Apple Computer, Inc.  
Windows 98, Windows NT, Windows 2000, Windows Me and Windows XP are registered Trademarks of Microsoft Corporation.