



# WMS-208N

Network Access Control Server Gateway (Authentication, Authorization, Accounting), W/ AP Management for 12 Aps for SMB, Enterprise, ISP

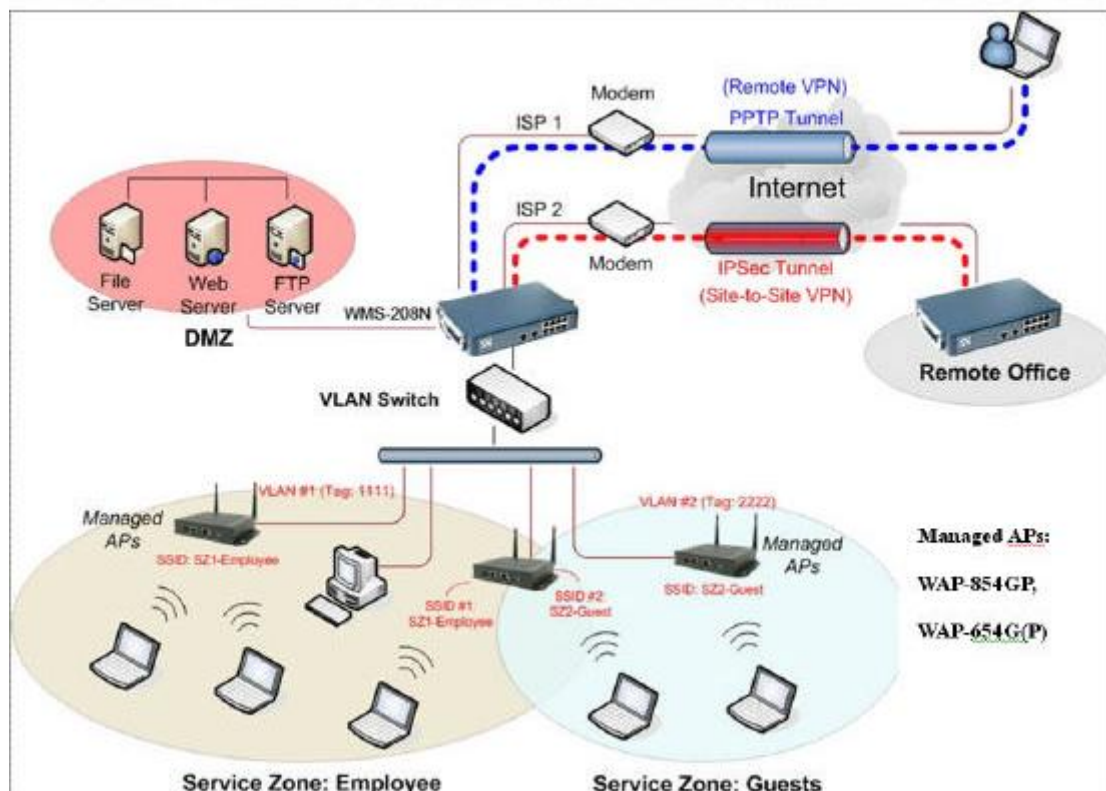
PheeNet WMS-208N is a new generation Network Access Control Gateway comparing with WMS-208. WMS-208N has brand new features, like service zone while integrating with WAP-854GP Multi-SSID features. You can set different firewall, routing, login schedule, and max concurrent session into different service zone by different user groups to provide more flexible, efficient, efficiency management for your Wired & Wireless network.

Moreover, not only 2 WAN Fail-Over, but also WMS-208N does support Load Balance, and quality wireless user VPN, site-to-site VPN, and remote VPN. Considering Voice over IP technology popular, WMS-208N also support SIP transparent pass through.

PheeNet WMS-208N is an excellent Network Access Control solution for not only SMB, Enterprise, but also Hospitality, Hotel, and Factory.

## APPLICATION

**Wireless Switch / Wireless Security ( by integrating with WMS-208(N) )**



## Features

1. Quality VPN – wireless VPN, site-to-site VPN, and remote VPN
2. Fail-over and load-balancing on dual WAN ports
3. Single login account roaming across APs
4. Centralized AP management – WAP-854GP, WAP-654G(P)
5. Role-based and policy-based access control
6. 8 Virtual Service Zones
7. Multiple authentication methods
8. On-demand guess account provisioning and management
9. Per-user bandwidth control
10. Paypal billing system, credit card and multiple billing plans for Internet access
11. Customizable login templates
12. User traffic report

## Specification

Software Features	
User Management	<ul style="list-style-type: none"> <li>- Supports up to 120 concurrent users</li> <li>- Provides 1000 local accounts</li> <li>- Provides 2,000 on-demand, instant accounts</li> <li>- Authentication methods supported: Local and On-demand accounts, POP3, LDAP, RADIUS, Windows Domain, and SIP authentication</li> <li>- Role-based and policy-based access control (per-role assignments based on Firewall policies, Routing, Login Schedule, Bandwidth)</li> <li>- Supports multiple logins with one single account</li> <li>- Session/account expiration control</li> <li>- Notification email to provide a hyperlink to login portal page</li> <li>- Windows domain transparent login</li> <li>- Configurable login time frame</li> <li>- Instant guest account generation by authorized users</li> <li>- Export/Import local users list to/from a text file</li> <li>- Definable session limit in policy puts a cap to each user's concurrent sessions (tcp/udp)</li> </ul>
AP Management	<ul style="list-style-type: none"> <li>- Supports up to 12 manageable IEEE 802.11 compliant APs</li> <li>- Centralized remote management via HTTP/SNMP interface</li> <li>- Automatic discovery of managed APs and list of managed APs</li> <li>- Allows administrators to add and delete APs from the device list</li> <li>- Allows administrators to enable or disable managed APs</li> <li>- Provides MAC Access Control List of client stations for each managed APs</li> <li>- Locally maintained configuration profiles of managed APs</li> <li>- Single UI for upgrading and restoring managed APs' firmware</li> <li>- System status monitoring of managed APs and associated client stations</li> <li>- Automatic recovery of APs in case in case of system failure</li> <li>- System alarms and status reports on managed APs</li> <li>- Supports Monitor IP on third-party APs</li> <li>- Templates for Managed APs</li> </ul>
Service Zone	<ul style="list-style-type: none"> <li>- Integrating with WAP-854GP to have Service Zone features, each Service Zone can have its own settings:               <ol style="list-style-type: none"> <li>(a) NAT or router mode</li> <li>(b) Enable DHCP or not, and DHCP address range</li> <li>(c) Enable authentication or not</li> <li>(d) Types of authentication options (Local, POP3, RADIUS, LDAP, NT Domain, On-demand)</li> <li>(e) Web login/logout/redirected page (customizable)</li> <li>(f) Wireless settings, SSID, wireless security</li> <li>(g) Default Policy                   <ul style="list-style-type: none"> <li>• Firewall rules</li> <li>• Specific route (WAN1 or WAN2, or a specified gateway)</li> </ul> </li> </ol> </li> </ul>

	<ul style="list-style-type: none"> <li>• Login schedule</li> <li>• Bandwidth (max, min)</li> </ul>
Networking	<ul style="list-style-type: none"> <li>- Supports Router, NAT mode</li> <li>- Supports Static IP, DHCP, PPPoE on WAN interface</li> <li>- Controllable LAN ports requiring authentication</li> <li>- Supports IP Plug and Play(IP PnP)</li> <li>- Built-in DHCP server and support for DHCP relay</li> <li>- Supports NAT: (a) IP/Port Destination Redirection (b) DMZ Server Mapping (c) Virtual Server Mapping (d) H.323 pass-through</li> <li>- Supports static route</li> <li>- Supports Walled Garden(free surfing zone)</li> <li>- Supports MAC Address and IP-address pass-through</li> <li>- Supports HTTP Proxy</li> <li>- Contain built-in hardware-based VPN accelerator</li> <li>- Support dual uplinks, outbound load balancing and failover for more reliable Internet connection</li> <li>- Support SIP pass-through NAT</li> </ul>
Security	<ul style="list-style-type: none"> <li>- Supports data encryption: WEP(64/128-bit), WPA, WPA2</li> <li>- Supports authentication: WPA-PSK, IEEE 802.11x(EAP-MD5, EAP-TLS, CHAP, PEAP)</li> <li>- Supports VPN Pass-Through (IPSec and PPTP)</li> <li>- Supports DoS attack protection</li> <li>- IPSec / PPTP VPN</li> </ul>
Accounting and Billing	<ul style="list-style-type: none"> <li>- Support for RADIUS accounting, RADIUS VSA(Vendor Specific Attributes)</li> <li>- Built-in billing profiles for on-demand accounts by time(hour)and data volume(MB)</li> <li>- Support automatic e-mail to report network traffic history</li> <li>- Provides billing report on screen for on-demand accounts</li> <li>- Detailed per-user traffic history based on time and data volume for both local and on-demand accounts</li> <li>- Traffic history report in an automatic email to administrator</li> </ul>
Monitoring and Reporting	<ul style="list-style-type: none"> <li>- Status monitoring of on-line users</li> <li>- IP-based monitoring of network devices</li> <li>- WAN connection failure alert</li> <li>- Support syslog for diagnosing and troubleshooting</li> <li>- User traffic history logging</li> <li>- User's session log can be sent to ftp or Syslog server</li> </ul>
System Administration	<ul style="list-style-type: none"> <li>- Multi-lingual, web-based management UI</li> <li>- Customizable login and logout portal page</li> <li>- SSH remote management</li> <li>- Remote firmware upgrade</li> <li>- NTP time synchronization</li> <li>- Console management interface support</li> <li>- Backup and restore of system configuration</li> </ul>
<b>Hardware</b>	
Hardware Platform	Intel IXP -425, 533MHz
Interface	<ul style="list-style-type: none"> <li>- WAN Ports : 2 x 10/100BASE-T RJ-45</li> <li>- LAN Ports : 8 x 10/100BASE-T RJ-45</li> <li>- Console Port : 1 x RJ-11</li> </ul>
Environment	Operating Temperature : 0 ~ 45 °C Storage Temperature : 0 ~ 65 °C
Power	110~240 VAC, 50/60 Hz
LED Indicators	1 x Power, 2 x WAN, 8 x LAN
Dimension	243 mm(L) x 150 mm(W) x 45.5 mm (H)
Weight	1.4 Kg
Certificate	CE, FCC

## PheeNet Technology Corp.

Rm. 3, 20F, NO. 79, Hsin Tai Wu Rd., Sec. 1,  
Hsi-Chih, Taipei, Taiwan  
<http://www.pheenet.com>

TEL: 886-2-26982011 FAX: 886-2-26981421

