

SAR-600E

Single LAN port ADSL Router

Easy Start

Version 1.0

Solwise Ltd

www.solwiseforum.co.uk

The Solwise Forum is designed to be the first port-of-call for technical support and sales advice for the whole Solwise product range.

Please check the forum for coverage on any technical problems you have. Many people have trodden your path before you, and a quick check on the forum will reduce the pressure on our support staff

Contents:

1	Introduction	2
	1.1 Minimum System Requirements.....	2
	1.2 ADSL Router Package	2
	1.3 ADSL Router Overview	3
2	Connecting the ADSL Router to Your Computer/Notebook.....	5
	2.1 Connecting to the Ethernet.....	5
	2.2 Connecting to the ADSL Line	7
	2.3 Connecting to the Power Outlet	7
	2.4 Powering On	7
3	Configuring Your Network Card and Browser	8
	3.1 Configuring Your Ethernet Network Card	8
	3.2 Configuring Your Internet Browser	10
4	Connecting to the Internet.....	11

- Product warranty does not apply to damage caused by lightning, power surges or wrong voltage usage.
- This product is for use only in UL Listed computers.



13/15 Springfield Way
Anlaby
Hull HU10 6RJ
UK
Tel: 0845 458 4558 (local rate)
Fax: 0845 458 4559
Support Tel: 0845 1931320
SBV: 1100
Email sales@solwise.co.uk
Http www.solwise.co.uk

Copyright

All rights reserved. No part of this document may be reproduced in any form or by any means without written permission from the product manufacturer.

Changes are periodically made to the information in this document. They will be incorporated in subsequent editions. The product manufacturer may take improvement and/or changes in the product described in this document at any time

1 Introduction

Thank you on your purchase of the SAR-600E ADSL Ethernet router! The SAR-600E Router provides you with a high-speed broadband Internet connection using your existing phone line that at the same time allows you to make phone calls.

The SAR-600E can be connected to any computer/notebook with a 10/100 Base-T Ethernet card. For multiple users connection, you may expand the Ethernet connection of the ADSL Router with an Ethernet Hub / Switch.

This documentation assumes that you have already installed an Ethernet card on your computer/notebook.

1.1 Minimum System Requirements

- Pentium® MMX 233MHz
- A CD-ROM Drive
- Ethernet card installed with TCP/IP Protocol (required only if you are connecting to the ETHERNET port of your DSL Router)
- OS independent for Ethernet
- Web Browser support:
 - Microsoft Internet Explorer 4.0 (or later versions)
 - Netscape® Navigator 3.02 (or later versions)

1.2 ADSL Router Package

For any missing items, please contact your dealer immediately.

1. ADSL Ethernet



2. Installation CD



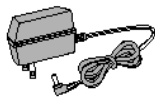
3. Easy Start Guide



4. Telephone Cable (RJ-11)



5. Power Adapter (DC 9V)

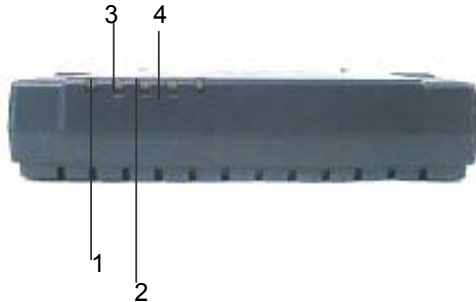


6. CAT-5 UTP Straight Ethernet Network cable (RJ-45)



1.3 ADSL Router Overview

Front Indicators



1 PPP

Lights up when the PPP connection is established.

2 PWR

Lights up when power is supplied to the Router.



Lights up when the ADSL connection is established.

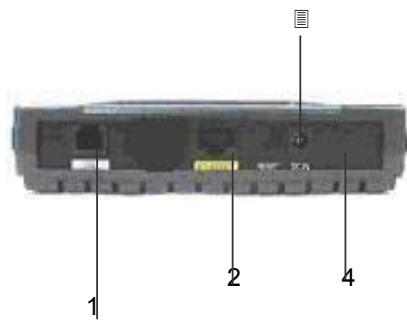
Flickers when the ADSL Router is trying to establish a connection with the ADSL Service Provider

4 ETH/ACT

Lights up when the Ethernet cable is properly connected from your ADSL Router to the Ethernet Card.

Flickers when the ADSL is transmitting / receiving data.

Back Panel



1 DSL

Telephone jack (RJ-11) to connect to your Telephone Wall Socket (ADSL line).

2 ETHERNET

10/100 Base-T Ethernet jack (RJ-45) to connect to your Ethernet Network card or Ethernet Hub / Switch.

3 RESET

To reset your ADSL Router to factory default settings. (All customised settings that you have saved will be lost!) Please see below on how to activate the reset function.

To activate the reset function:

- Ensure that your ADSL Router is powered on.

- Use a paper clip or a pencil tip to depress the reset button and release.

*At this point, the **DSL** indicator light will go off, followed by the **ETHERNET** indicators. The reset is in progress.*

- When the **DSL** indicator starts blinking, it means that the reset process is completed. The default settings are now restored.*
- ADSL line is established once the **DSL** indicator lights up.*

4 DCIN

To connect to the Power Adapter that comes with your package.

2 Connecting the Router to Your Computer

! Power off your Computer/Notebook or/and any connected devices before connecting to the ADSL Router!

To connect to your ADSL Router, you need to have either an **Ethernet Port** present on your computer/Notebook.

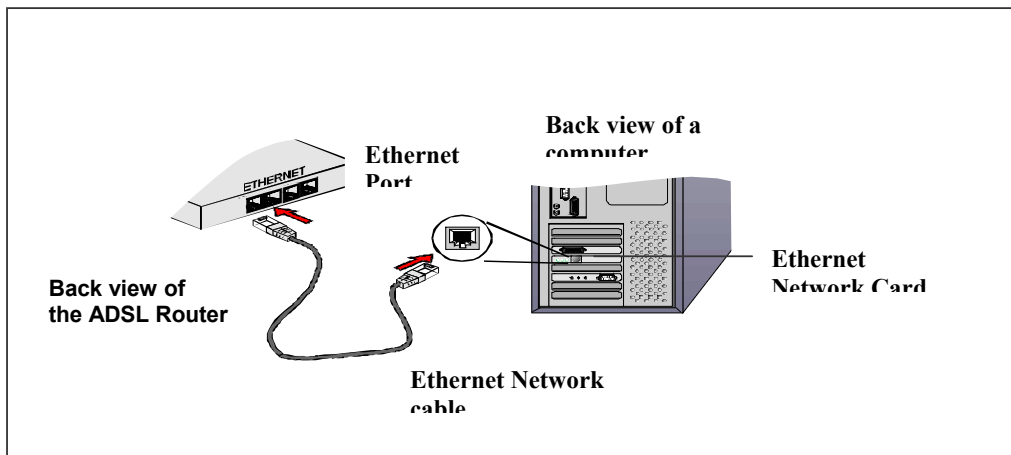
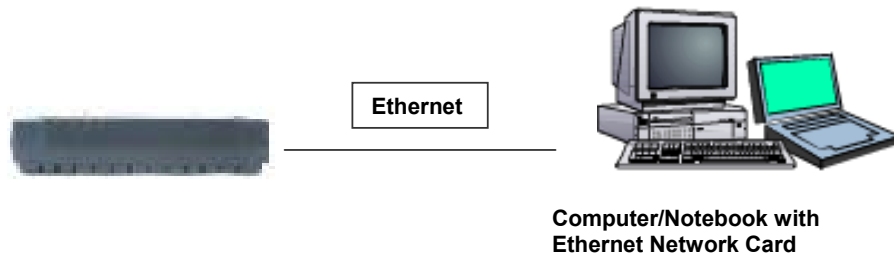
2.1 Connecting to the Ethernet

(See the note on the following page if you are not sure what an Ethernet Port looks like)

2.1.1 For Single-User Connection

The following shows a typical single-user connection.

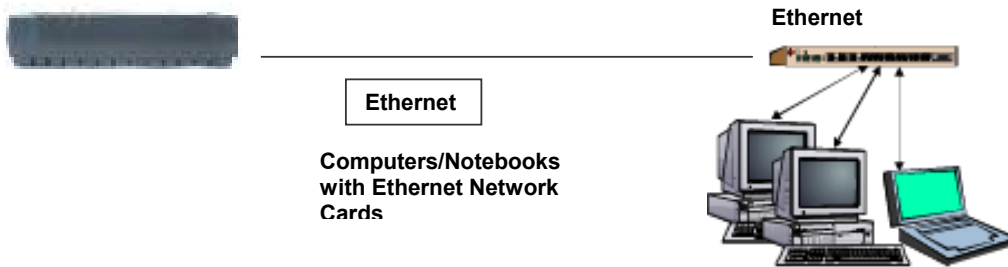
Check if your Computer/Notebook has an **Ethernet Port**.



2.1.2 For Multiple-User Connection

For more than 2 computers/notebooks connections, you may also expand the Ethernet connection by connecting the ADSL Router to an Ethernet Switch/Hub. Please note, if your switch or hub does not have auto sensing LAN ports, then you will need to connect the Ethernet port of the router to the X-Over (cross-over) port on your switch or use a LAN cable cross-over adapter.

See the following illustration.



For details on the connection and types of Ethernet Network cable to use with the Ethernet Switch/ Hub, please refer to documentation that comes with your Ethernet Switch/Hub.



NOT SURE HOW THE ETHERNET PORT LOOK LIKE?

The following are some tips to help you locate your Ethernet Ports on your Computer/Notebook. Alternatively, you may refer to the documentation that comes with your Computer/Notebook.

Locating the Ethernet Port on your Computer/Notebook

Most Computers/Notebooks have labels describing the Ports. For Ethernet Port, you will see **ETHERNET**, **ETH** or **RJ45** labelled near the Port. If your Computer/Notebook does not have such descriptions, try the following.

- **Picture A** gives the illustration of an Ethernet Port. All Ethernet Ports have **8** conductors on it. Do not mistaken with the LINE Port (Picture B) that has only **6** conductors.

-The Ethernet Port is slightly bigger than the LINE Port.

A. ETHERNET:

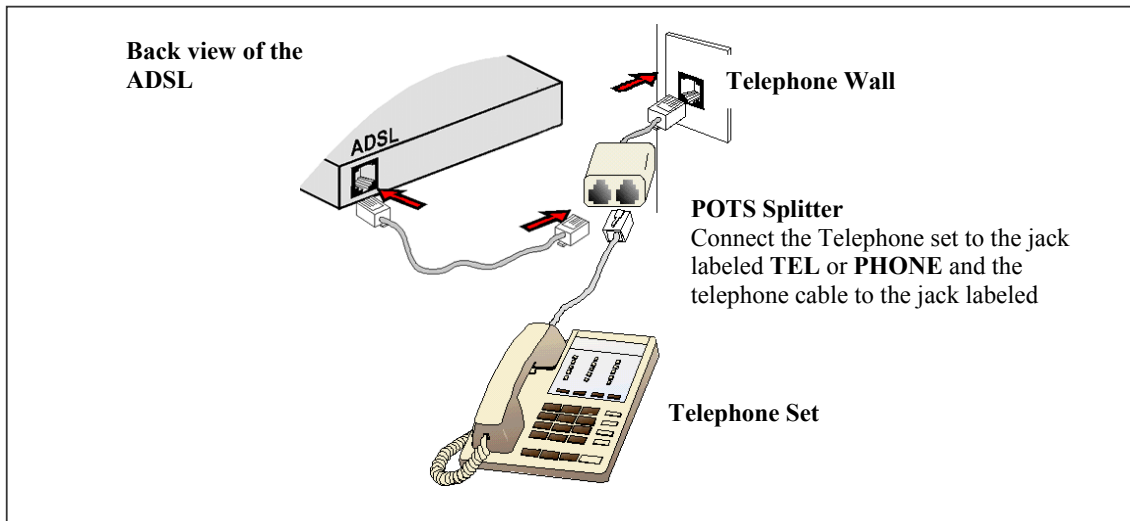


B. LINE:



2.2 Connecting to the ADSL Line

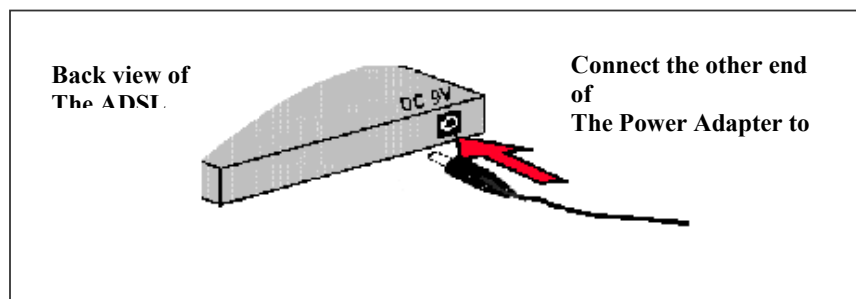
To connect the ADSL Ethernet Modem to the ADSL line and a Telephone Set:



The POTS Splitter (with built-in Microfilter) is a device that allows you to connect both your Telephone cable and Telephone Set to the same Telephone Wall Socket. The device at the same time helps to eliminate background noise on the telephone line, ensuring the best possible phone performance.

2.3 Connecting to the Power Outlet

Connecting your ADSL Router to the Power Outlet via the Power adapter (that comes with your ADSL Router package).



2.4 Powering On

- Power on the Power Outlet that is connected to your ADSL Router.
- Power on your Computer(s)/Notebook(s).

3 Configuring Your Network Card and Browser

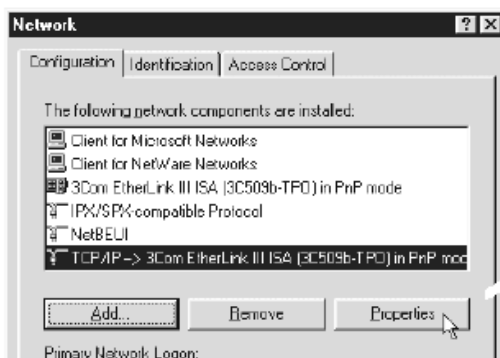
3.1 Configuring Your Ethernet Network Card



1. The following illustrated screen shots serve only as examples. For any dissimilarities, please follow closely the instructions prompted on your Computer.

3.1.1 For Windows® 98 Second Edition / Windows® Me

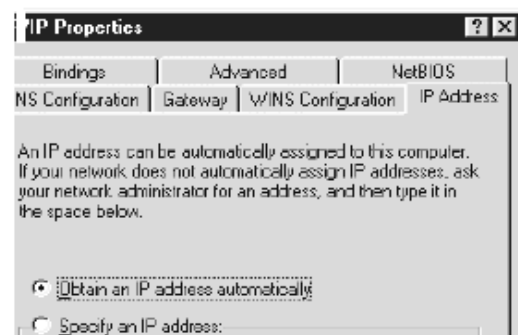
- i From your Windows desktop, right-click on the **Network Neighborhood** icon. Select **Properties**.
- ii From the **Configuration** tab, select **TCP/IP-> xxx** where **xxx** refers to the **model of your Ethernet Card that is connected to your ADSL Router**. Click **Properties**.



(This screen shot uses **3Com EtherLink** Ethernet card model as an



- iii Click the **IP Address** tab. Click the option **Obtain an IP address automatically** and click **OK** to save the settings.



Ensure that your ADSL Router is powered on.
Restart your system. Proceed to [Step 3](#).

3.1.2 For Windows® 2000 / Windows® XP

- i Windows® 2000:
 - a) From your Windows desktop, right-click on the icon **My Network Places** and select **Properties**.
 - b) At the **Network and Dial-up Connections** window, right-click on the **Local Area Connection** icon and select **Properties**.

Windows® XP:

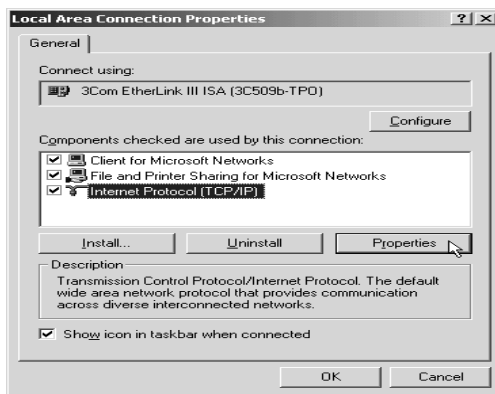
(Instructions are based on default **Start menu** option)

- a) From your Windows desktop, click **Start > All Programs > Accessories > Communications > Network Connections**.
- b) Right-click on the **Local Area Connection** icon that reflects the model of your **Ethernet Card** that is connected to your **ADSL Router** and click **Properties**.

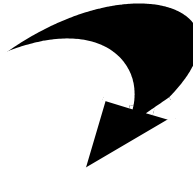
ii Ensure that the field **Connect Using** indicates the model of your Ethernet Card that is connected to your ADSL Router.

(This is important especially if you have more than one Local Area Connection icons displayed at the Network and Dial-up Connections / Network Connections window. Ensure that you have selected the correct one.)

Select **Internet Protocol (TCP/IP)** and click **Properties**.



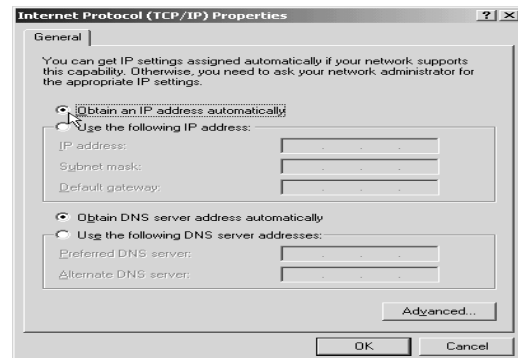
(This screen shot uses **3Com EtherLink** Ethernet card model as an example).



iii Select the option **Obtain an IP address automatically** and click **OK**.


Click **OK** again to close.

Ensure that your ADSL Router is powered on. Restart your system. Proceed to Step 3.



3.2 Configuring Your Internet Browser

3.2.1 Microsoft® Internet Explorer™ (based on IE 5.5)

i From your Windows desktop, double-click on your Internet Explorer icon  to launch your Browser.

ii From the Menu, click **Tools** and select **Internet Options**.


iii Select the **Connection** tab. Click the field, '**Never dial a connection**'. (This option will be grayed off if you have not installed an analog modem on your computer/notebook before).

iv Click the **LAN Settings...** button. Ensure that your **Proxy Server** is not enabled.

v Click **OK** to close the dialog box.

You may now proceed to **Step 4** to establish your Internet connection.

3.2.2 Netscape® Navigator

i From your Windows desktop, double-click on your Navigator icon  to launch your Browser.

ii Depending on your Netscape versions, carry out one of the following instructions:
Click **Options > Network Preferences**.

Select **Proxies**. Ensure that the **No Proxies** option is selected.

OR

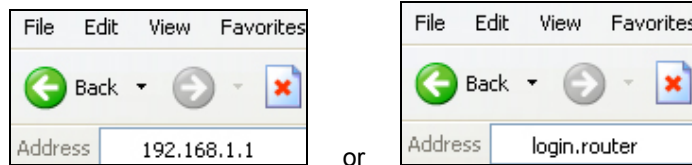
Click **Edit > Preferences**.

Select **Advanced** and click **Proxies**. Ensure that the option **Direct Connection to the Internet** is enabled.

iii Click **OK** for changes to take effect.

4 Connecting to the Internet

i From your Internet Browser, key in **http://192.168.1.1** or **login.router** at the address bar and hit <Enter>.



ii You will be prompted for the Username and Password to login to the Web Management.

 A login form titled 'Modem Access'. Below the title, it says 'Modem authentication is required. This is different from your ISP username/password.' There are two input fields: 'Username:' with 'admin' entered, and 'Password:' with 'admin' entered. A 'Log In' button is at the bottom right.

Enter admin for the username and admin for the password (factory defaults). Click OK.
(Not that this Username and Password is not the same as the username and password given by your ADSL Service Provider to connect to the Internet).

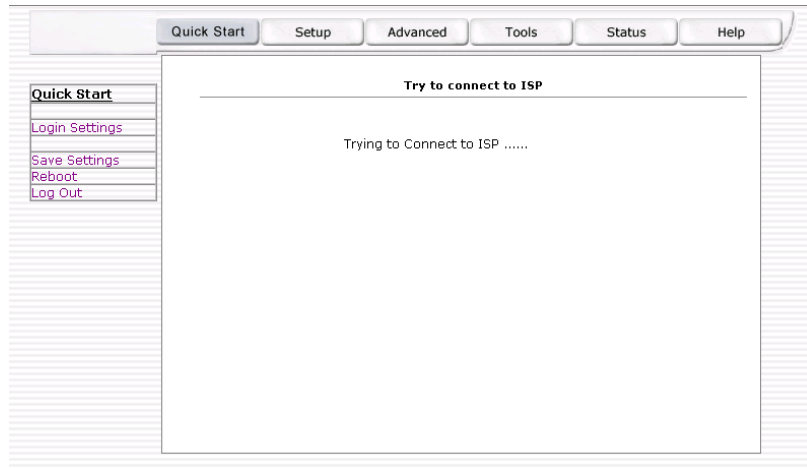
iii Click Quick Start and the login settings page are displayed..

 The router's web management interface. At the top are tabs: 'Quick Start', 'Setup', 'Advanced', 'Tools', 'Status', and 'Help'. On the left is a sidebar with 'Quick Start' selected and other options like 'Login Settings', 'Save Settings', 'Reboot', and 'Log Out'. The main content area is titled 'Login Settings' and contains:

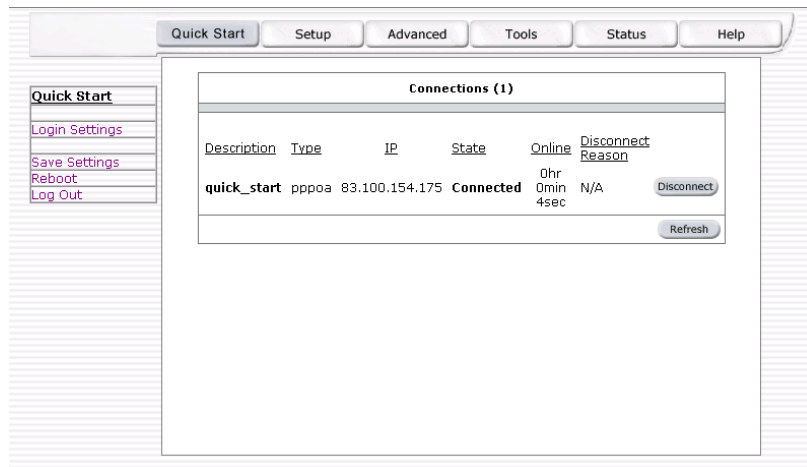
- User ID: (Example: user@ispname)
- Password: (Provided by your ISP.)
- Protocol: (dropdown menu)
- VPI:
- VCI:

 At the bottom left is a 'Connect' button. A red note at the bottom right says: 'Note: After clicking on Connect, please be sure to click on "Save Settings" so that your username/password and other settings will be saved for next modem reboot.'

iv Enter the username and password for your ISP Internet account. The values for Protocol, VPI, and VCI should be PPPoA VcMux, 0, 38 (UK default for BT phone line). Then click on Connect. The router will now attempt to connect to your ISP.

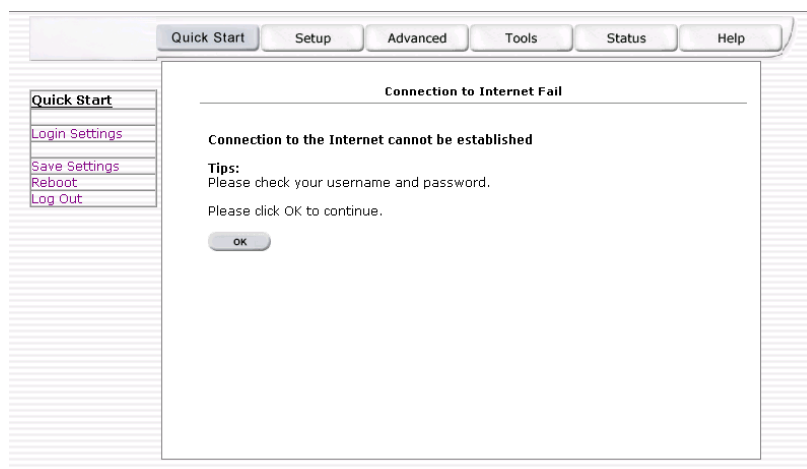


v If the router succeeds then you should see a page similar to below and you are now connected to the internet.



Now click on the Save Settings menu option to ensure your settings are stored.

vi But, if the router fails, then you should see a page similar to this.



You should click on OK to re-enter or check your account details.