

PAN & TILT 3.5” IP Dome Camera with WiFi

SEC-C1062W Pan & Tilt IP Camera



Description

The SEC-C1062W is a cost efficient IP camera, especially suitable for all broadband users. SEC-C1062W comes with Wi-Fi and RJ-45 port with support for DHCP and DDNS client.

SEC-C1062W is an economical model of advanced IP camera device. It comes with many high quality features, yet cost is relatively low. SEC-C1062 works standalone with broadband connection allows remotely viewing of images by Microsoft IE browser anywhere, any time.

Just like any network device, with its own IP address, SEC-C1062 connects directly to a standard network switch or wireless AP. This enables viewing real time digital video over the LAN or Internet from all over the world.

SEC-C1062W uses existing Network (IP) technology. In a case of surveillance project, using existing IP network infrastructure combined with the SEC-C1062W, removes extra costs normally related to traditional installation and deployment of analog CCTV surveillance systems (such as coaxial cables, monitors and video recorders). Also, being digital, the problem of loss of resolution with cable length doesn't exist.

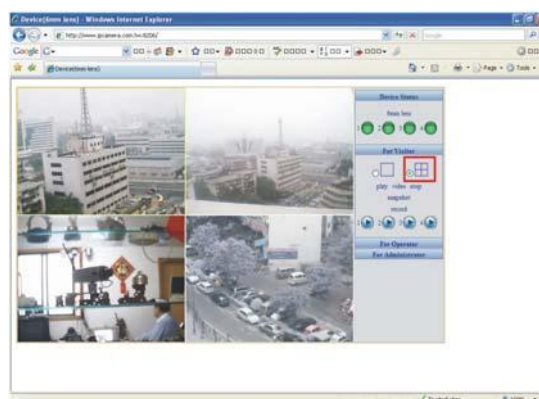
SEC-C1062W is designed around a powerful camera platform. A flexible embedded WEB server and real-time operating system with Standalone Motion Detection alarming guarantee 24/7 operation in the most demanding of environments.

1

Feature Highlights

- A least cost solution for remote monitoring;
- PAN 355 degree, TILT 90 degree

- A highly developed on-board image processor;
- An inbuilt WEB server and standalone motion detection;
- JPEG and MJPEG video compression;
- Access by IE browser, no complicated client software required;
- View 1 or 4 cameras image on IE screen;
- Recording on IE screen, playback by media player;
- Simultaneous Multiple Accesses from remote, LAN or Internet;
- Additional security is provided through password protections for the camera;
- Standalone motion detection and alarm input to trigger snapshots;
- Email snapshots enable sending alarm notifications to assigned e-mail boxes;
- Send snapshots to FTP server;
- Easy IP camera tool & quick install guide are included in product CD;
- DHCP and DDNS service;
- Connect to ADSL/Cable Modem or NAT router;
- Monitoring/ video recording is included in hardware;
- IEEE 802.11g/b 2.4GHz Wi-Fi with WEP 64/128 bits protection.



Market Applications

Due to the benefits of our low costs strategy, new business applications can be implemented and integrated with SEC-C1062, such as:

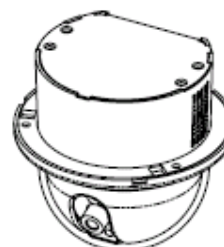
- ISP promotional bundles
- VoIP telephone tie-in to be video phone
- Live video embedded into homepages, online advertisement
- Remote Control / Vehicles Control / Chain stores Control / Advertising / Traffics Alerts
- Baby and elderly tending
- Private Security/ Caring



Technical Data

Image System

- Compression: Motion JPEG hardware compression
- 350,000 pixels CMOS sensor
- f: 6.0mm to infinity, C/CS mount lens
- Min. 2.0 to 3.0 Lux
- Min. 0 Lux with IR Leds
- Automatic Exposure Control
- Automatic Gain Control



- Automatic Brightness Control
- Automatic White Balance
- Flicker Avoidance (Flicker less)
- Resolution:

QVGA (320 x 240) VGA (640 x 480)

- Image Frame Rate:

Max. 25 fps at QVGA resolution, average 4 Mbps/sec
Max. 15 fps at VGA resolution, average 4 Mbps/sec



Mechanical

- PAN : 355°
- TILT : 90° / 116°
- IR leds : Ø10 LED
- I/O Interface
CAT5, RJ-45 x1 (802.3)
IEEE 802.11g/b Wi-Fi with WEP (C1062W)

Network Protocols

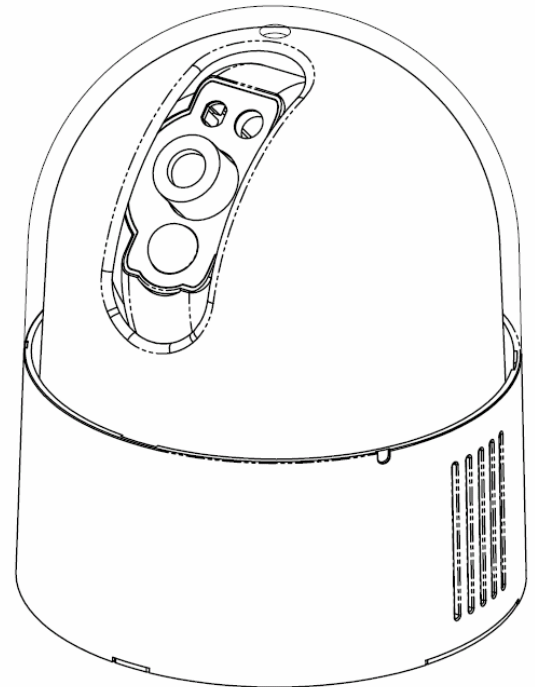
- TCP/IP, HTTP, ARP, ICMP, PPPoE, DHCP, SMTP, DDNS, FTP

Client

- IE6

Antenna

- Detachable (RSMA)
- 2dBi @2.4GHz
- IPEX1.13



Mechanical & Environment

- Dimensions (mm): dia.: 95 (dome), 121 (ring), mount length: 150
- Weight (g): 450
- Power Requirement: 5 V / 1A
- Operation Temp: -10 °C to 50 °C (14 °F to 122 °F)
- Humidity: Rh10 % to 90 %

